



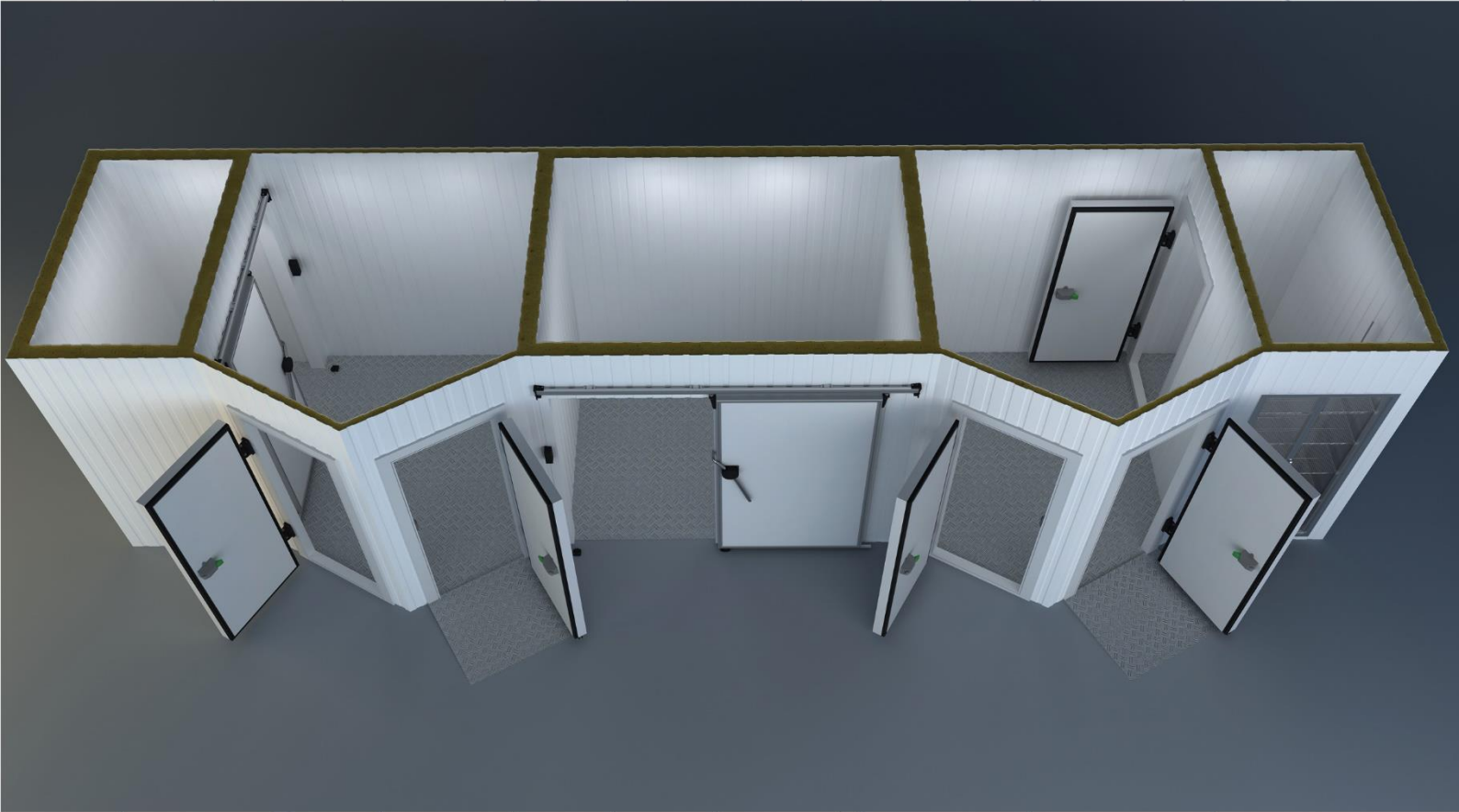
# COLD ROOM DOOR & ACCESSORIES

## Sliding Doors



**inovarefrigeration**  
by INOVA YAPI

# INOVA REFRIGERATION DOOR AND ACCESSORIES



## Inova Group :

Since its inception, it has Reached More Than 10,000 Customers Worldwide & We Manufactured Than More 80,000 Doors.

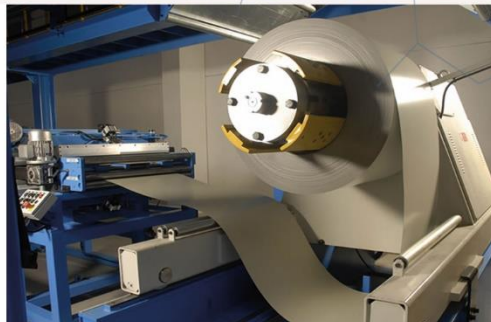
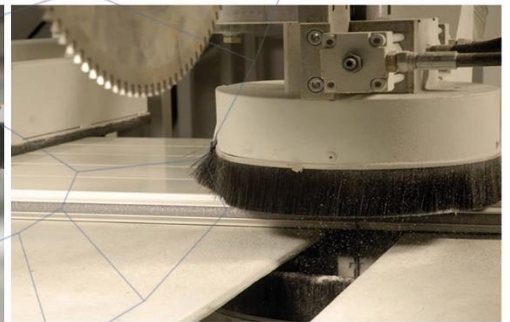
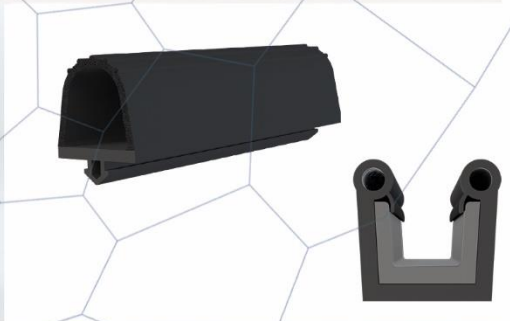
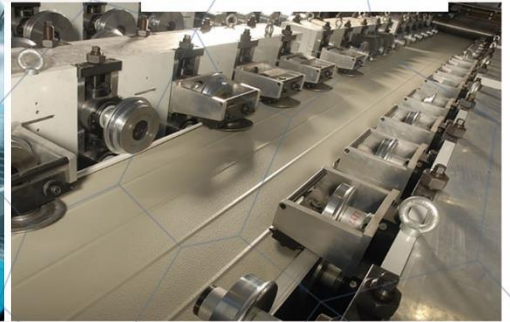
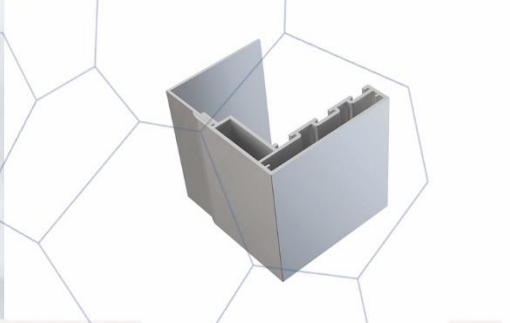
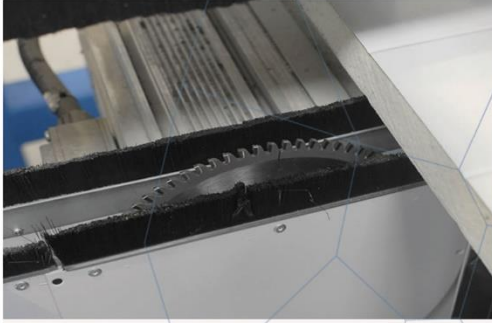
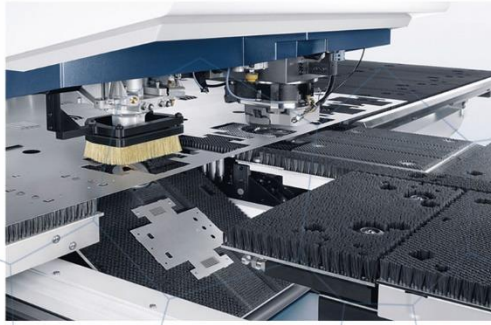
## Our Production of Turkey :

Sliding Door With Personal Door , Folding Service Door , Double Wings of Sliding Door & With These Doors We Manufactured Hinged Door , Sliding Door ,FlipFlap Door ,Service Door & Monorail System INOVA GROUP Aims to Keep Customer Satisfaction at Maximum Level With its Quality & Service Import – Export – Production – Marketing - Sales & After - Sales Services Constitute Our Main Activity Structure .

IF YOU GIVE IMPORTANCE TO CUSTOMER YOU WILL BE THE MOST VALUABLE BRAND OF WORLD..

Inova Group Continues to Action With This Mission.

# INOVA DOOR AND ACCESSORIES SYSTEMS



inovarefrigeration  
by INOVA YAPI

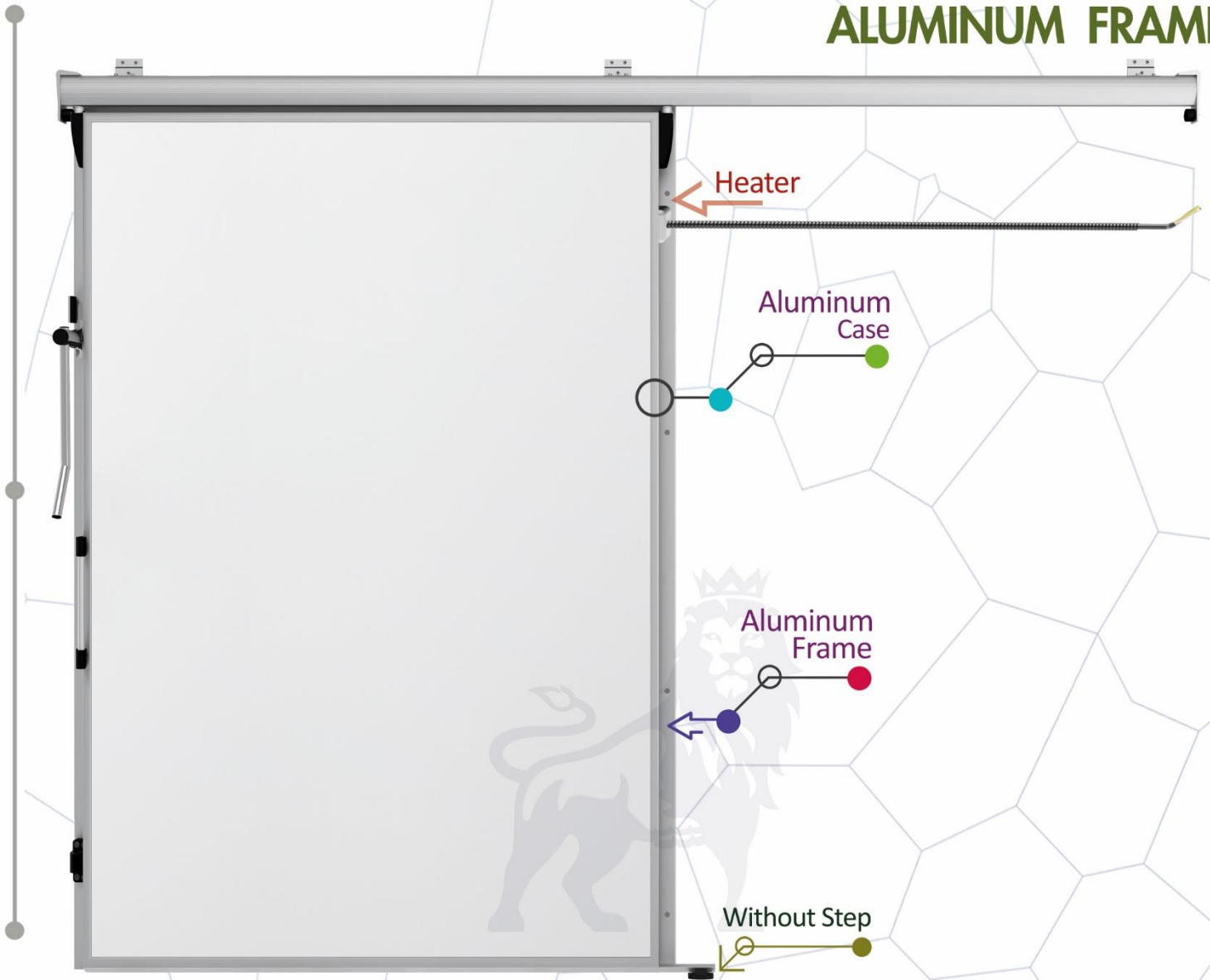


THE DOORS WITH INSULATING, FILLED WITH POLYURETHANE, ISOTHERMIC - HINGED AND SLIDING DOORS-TWO LEAVES SLIDING DOORS- SLIDING DOORS WITH PERSONAL DOOR MONORAIL TYPE DOORS USAGE AREAS;



- Cold storage
- Cold rooms
- Modular cold plants
- Walk-in freezer rooms
- Vehicles with cold dorse
- Cold product protection rooms
- Shock freezing chambers
- Climating rooms
- Medical materials and waste plants
- The facilities that apply polyurethane
- Factories
- Health and beauty facilities
- Hotels
- Hospitals
- Restaurants
- Chemical laboratories
- Gsm
- Telecominication
- Morgues
- Operation rooms
- Units in which insulation and hygiene are required

# ALUMINUM FRAME



## COLD ROOM DOOR & ACCESSORIES Sliding Doors



inovarefrigeration  
by INOVA YAPI

**Usage areas :**

Cold storage , Cold rooms ; Product freezing rooms , Shock production chambers , Hotels , Medicine Storage rooms , Medical materials & Waste plants , Air conditioning rooms , Food facilities such as meat , Cheese, Milk Production facilities, Warehouses, Factories, Painthouses, Women's health & beauty centers , Garbage processing plants , Morgues , Frigolu vehicles , Telecommunication base station centers , Hygiene areas , Restaurants Food production facilities, Pastries , Hot rooms , Gsm booths , Integrated production facilities , Pc server rooms, Vegetable & fruit processing plants, Pickles Tomato Paste production facilities , Hospitals , Operating theaters , Fish production & processing plants , Clearing stations , Chemical laboratories .

**Doors Special Solutions :**

- Doors are easy & fast to mounted & easy to maintain
- The area to be used is produced according to your needs
- Includes special accessories developed according to every need
- It has a system to be installed according to each wall type
- It has the feature of keeping the thermal insulation at maximum level
- We use Package with strength packaging system
- Sliding type doors are produced from heat bridged profiles.maximizes

**Environment and User Friendly :**

- Clean design
- Does not contain bacteria
- Corrosion resistant
- High-pressure accessories
- Manufacturing with environmentally friendly products
- Maximum energy saving
- Durable materials
- High vapor proof sealing system
- Quiet and smooth operation

**Dimensions of Standard Model Doors :**

In general, sliding door models are not standard in the world.

**Minimum and Maximum Door Dimensions :**

- Minimum : 100 cm Width \* 100 cm High \* 80 mm thickness (wing / blade size)  
Maximum : 300 cm Width \* 500 cm High \* 80 mm thickness (wing / blade size)  
Maximum : 500 cm Width \* 300 cm High \* 80 mm thickness (wing / blade size)

Maximum door dimensions can be made by considering the international transportation standards.  
Measures can be made in the desired size in the areas to be applied on-site.  
Maximum dimensions can be increased for Opentop containers and truck transport



**TECHNICAL SPECIFICATIONS OF DOORS :**

- Room temperature range door to use** : NEGATIVE- 50C / POSITIVE 80 ° C
- Door type** : Sliding door
- Door Blade ( wing )Thickness** : 80 mm
- Door Blade ( wing ) sheet feature** : Door sheet are coatings with scratch protection surface with PVC films 100-200 μ micron / 0,50 mm x 0,70 mm (minimum) hot dipped galvanized coil coating painted steel.
- Door Blade (wing) sheet quality** : dx51d + z- EN 10327- Standards
- Door Blade (wing) insulation features** : Polyol + Izocyanate = Polyurethane
- Insulation density** : 40- 45 kg / m<sup>3</sup> - EN 1602 Standards
- Thermal Conductivity Coefficient** :  $\lambda = 0,022$  W/mK - EN 13162
- Fire Classification** : PUR- B-s1, d0 EN 13501-1/PIR B-s1, d0 EN 13501-1 ( optionally )
- Door Blade (wing) color suggested** : Standard models Ral 9002- Different colors optional  
PVDF (Polyvinylidene Floride) Painted Galvanized sheet
- Door Insulation Gaskets** : Double Density Component with Epdm & PVC Combination  
Suitable for use in the thermal temperature range between 65 ° C & + 150 ° C As used in food and living areas, it's in compliance with 21.CFR 177.2600 specifications & quality standards . the gasketed U polyamide support are used by us for the first time in the World , it's ensured that the gaskets are 100 % fully pressed against the door sill.
- Door Blade (wing) Case** : DIN 50049-2.2. / EN 10204-3.1.B. Anodized aluminum profile in Polyamide heat bridge according to the unit where the door is used or without bridges Frames first in the world It's implemented by us . this system, even if there is a power failure in the doors where the heater is installed 100% it will be prevented door freezing.
- Door Outer Handle** : There are 2 types of wings ( blade ) located on the outside of the door which provides a comfortable opening of the doors . According to the dimensions of the door & according to the customer requirements are applied either individually . The large opening lever is made of aluminum & stainless materials. 2. The holding drawbar PA 6.6 (Polyamide 6.6) is produced at 30 % GF standards.
- Door Inner Handle** : In dark rooms , In order to make the door opening handle easier & to facilitate the exit, the phosphor (shiny) marked PVC body has the inner handle with aluminum handle . Two arm application is made according to the door size.
- Door Top Rail (slider) System** : Aluminum top rail for easy opening & closing of doors System is available . Worldwide except Germany & Italy are also working with several companies that are manufacturing in Turkey doors reverse single rail system . While the reverse rail system provides ease of installation , the main purpose is 100% acceptance in terms of work safety rules worldwide . Thanks to this system, the doors do not fall on people in any impact or misuse . Sliding door production system DIN 50049-2.2./EN 10204-3.1.B standards of anodized aluminum profiles are composed of.Gaskets have a special system that can be pressed sideways & above . And it has an aesthetic appearance as it hides the mechanism running on the door . Doors run quietly inside the room No sagging, No breaking.



**Door Top Rail Stops** : There are L door stops at the top & End of the door to prevent the door from coming off the top rail. It's produced from aluminum profile materials according to DIN 50049-2.2./EN 10204-3.1.B. They are equipped with sound & speed cut-out rubber stop.

**Door Top Rail Wheels** : ZnAl27Cu2 in accordance with EN 12844 standards Zamak 27 materials are used in heavy industry around the World . Top wheel carriers with double - ball steel ball bearings When we use a plastic material system , we use steel roller bearing , zamak 27 rib rotors & reverse system upper rail wheels consisting of aluminum anodized parts in DIN 50049-2.2./EN 10204-3.1.B standards . You can adjust the irregularities in the units & the floor by means of this system . You can provide the full insulation of your door by completing all the process . To the excellent acoustics , the doors are quiet and easy to open & close.

**Door Bottom Rail** : DIN 50049-2.2. / EN 10204-3.1.B standards include anodized aluminum coated V sub-rail system . it provides closing of the door with the top + bottom rail system by providing 100% sealing from the bottom . The door lower rail system operates in parallel with the overflow system & the doors are lifted up when the doors are opened + presses down when closing. To this system, insulation is kept at maximum level.

**Door Bottom Rail Slider** : PVC Appearance PA 6.6 (Polyamide 6.6) is an aesthetic rail slide channel with 30% GF standards . It's mounted 5 cm outwards in the opening direction of the door. It's internal channel , it enables the door bottom rail to open & close easily.

**Door Front interlock** : Door pre - interlock is produced in male logic with PA 6.6 (Polyamide 6.6) 30% GF standards . It's aesthetic door closers with PVC look . 2- part clamping mechanism 1 piece on the door + 1 part is mounted on the door jamb or closing direction on the unit. Both parts are interlocked in the door closure & 100 % insulation is supported by allowing the door seals to fully press into the moldings.

**Door Front frame** : Anodized 100 % to DIN 50049-2.2. / EN 10204-3.1.B Standards german designed against frost , maximum heat insulation polyamide barrier aluminum moldings.

**Door Rear Frame** : 2 types of rear frame can be applied according to the wall thickness of the door to be mounted . It has 2 models in aluminum & PVC . Since the rear frames do not carry loads , they are applied only for image aesthetics.

**Door Opening System** : Sliding doors are mainly operated as manual option . Detailed information on sliding doors as well as motorized sliding doors are in the section.

**Resistance (heating cable )** : 220 Volt It can be connected directly It can work within the range of- 70 ° C to + 200 ° C Maximum degree.

**The viewing Window** : Surveillance windows are the window system for viewing the inside & outside . Fiber glass is made of hard & transparent material & Epdm flexible seals 100% leak-proof. ( Optional ).

**Door bumper plate** : Aluminum or Pvc Thick absorber materials applied on the inside or outside of the door on the lower parts of the door in frequently used & impacted areas are called bumper . bumpers are available as optional in cold room doors . In addition to aluminum material or PVC plate absorbers, stainless steel 304 quality thick sheet application can be made.



**Door Lock**

: 100% leak-proof & frost - free door lock that can be locked from the outside . PA 6.6 ( Poliamid 6.6 ) % 30 GF we manufacturing in standards . Dark rooms In order to detect the door lock & facilitate the output , it's marked with phosphorus (bright) ( optional )

**Optional door accessories**

- : Over 30 pieces. colors are Available
- 304 quality chrome stainless sheet blade
- Door Lock
- Viewing window
- Bumper plate
- PIR Polyurethane
- Automatic door closers

**ADVANTAGES OF SINGLE WING SLIDING DOORS :**

Provides maximum thermal insulation .

It can be opened wider (forklift , truck , truck , container, pallet ) provides great convenience in the transition. It provides to prevent heat losses by opening it to the desired extent in periods when big product loading is not done.

- Has an aesthetic & ergonomic look .
- Saves time & space .
- Single wing application saves cost thanks to its functional suitability in required areas.
- One-wing sliding sliding doors provide maximum advantage to the high insulation system , which allows you to use your unit components easily for many years with minimum payment convenience.

