



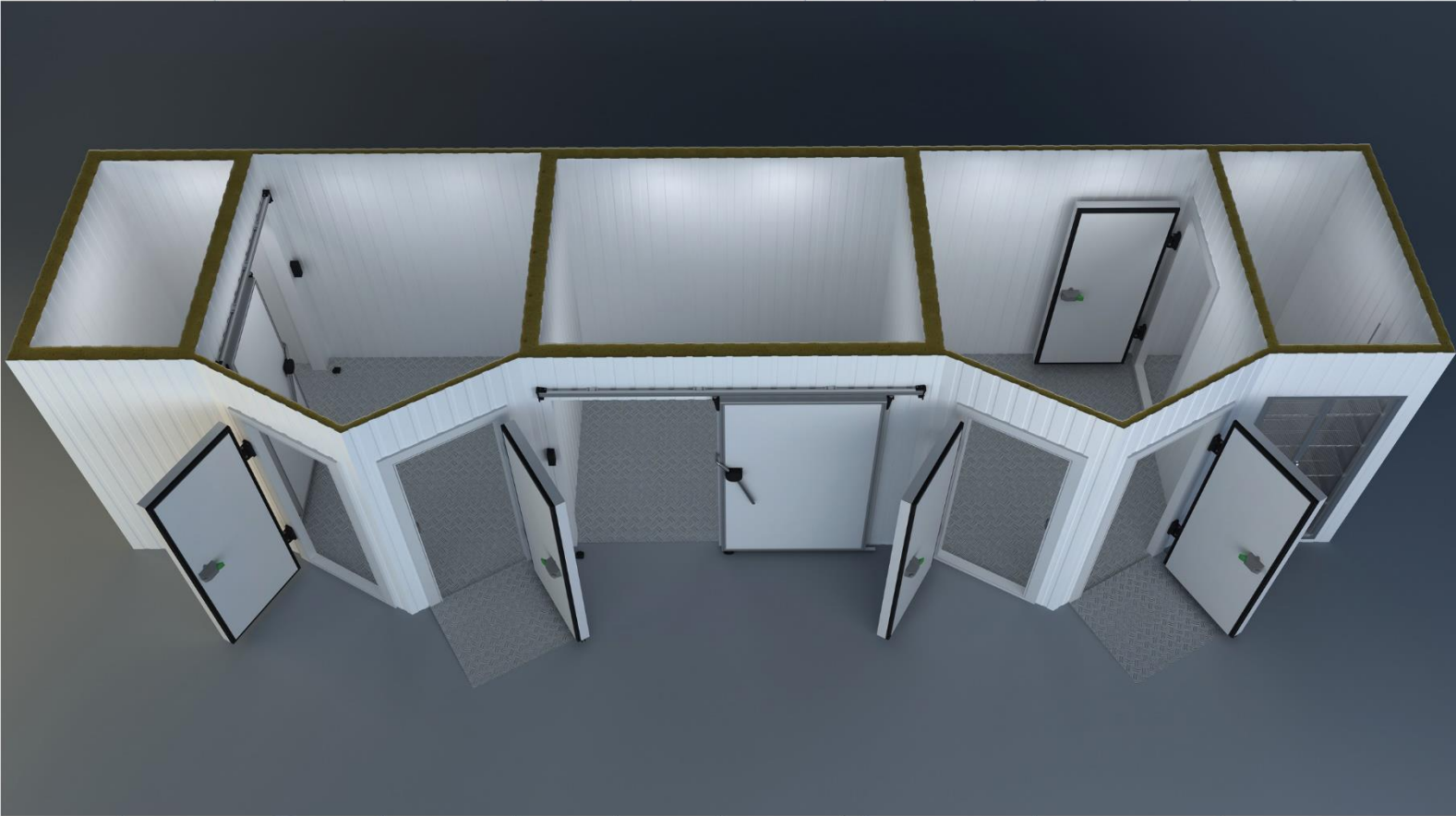
## COLD ROOM DOOR & ACCESSORIES

### Monorail Hinged Doors



**inovarefrigeration**  
by INOVA YAPI

# INOVA REFRIGERATION DOOR AND ACCESSORIES



## Inova Group :

Since its inception, it has Reached More Than 10,000 Customers Worldwide & We Manufactured Than More 80,000 Doors.

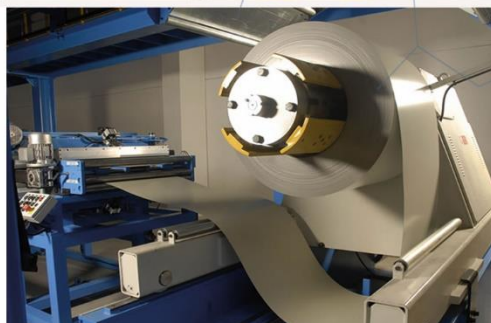
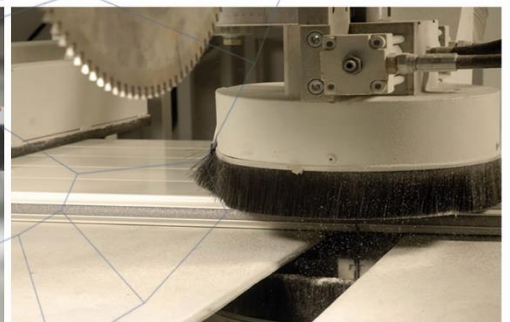
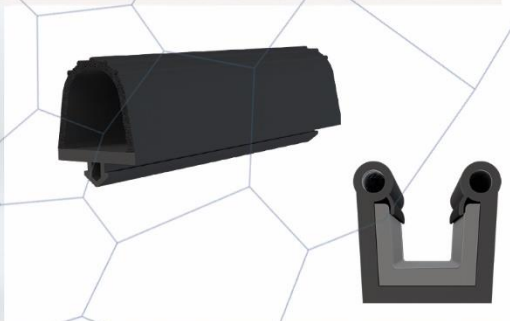
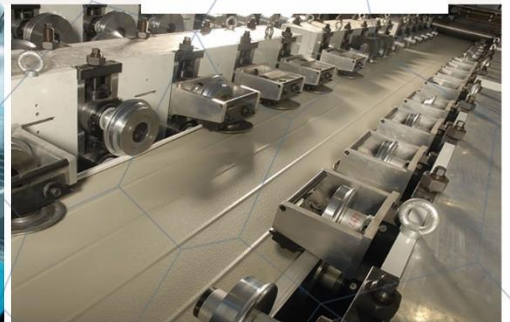
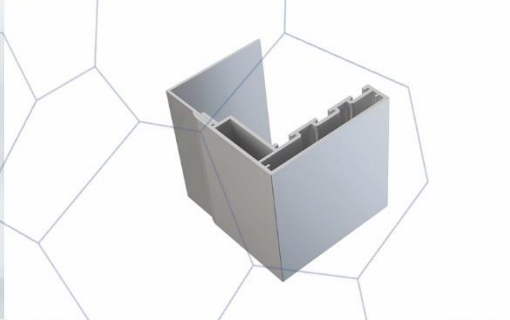
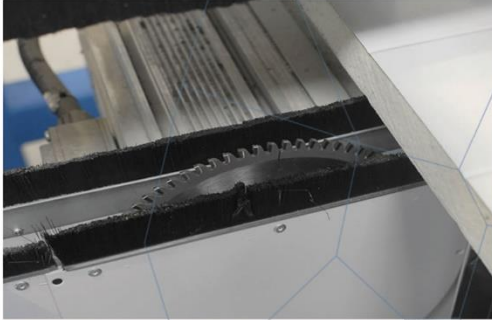
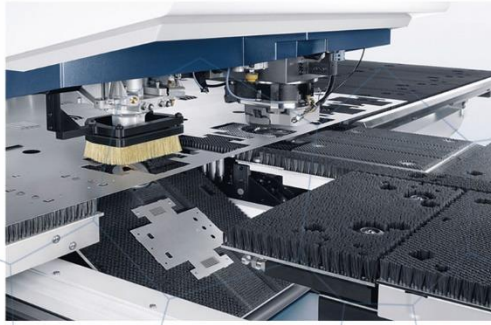
## Our Production of Turkey :

Sliding Door With Personal Door , Folding Service Door , Double Wings of Sliding Door & With These Doors We Manufactured Hinged Door , Sliding Door ,FlipFlap Door ,Service Door & Monorail System INOVA GROUP Aims to Keep Customer Satisfaction at Maximum Level With its Quality & Service Import – Export – Production – Marketing - Sales & After - Sales Services Constitute Our Main Activity Structure .

IF YOU GIVE IMPORTANCE TO CUSTOMER YOU WILL BE THE MOST VALUABLE BRAND OF WORLD..

Inova Group Continues to Action With This Mission.

# INOVA DOOR AND ACCESSORIES SYSTEMS



inovarefrigeration  
by INOVA YAPI



THE DOORS WITH INSULATING, FILLED WITH POLYURETHANE, ISOTHERMIC - HINGED AND SLIDING DOORS-TWO LEAVES SLIDING DOORS- SLIDING DOORS WITH PERSONAL DOOR MONORAIL TYPE DOORS USAGE AREAS;



- Cold storage
- Cold rooms
- Modular cold plants
- Walk-in freezer rooms
- Vehicles with cold dorse
- Cold product protection rooms
- Shock freezing chambers
- Climating rooms
- Medical materials and waste plants
- The facilities that apply polyurethane
- Factories
- Health and beauty facilities
- Hotels
- Hospitals
- Restaurants
- Chemical laboratories
- Gsm
- Telecominication
- Morgues
- Operation rooms
- Units in which insulation and hygiene are required

Monorail Channel

PVC FRAME

Aluminum Case

Pvc Frame

With Step

# COLD ROOM DOOR & ACCESSORIES

## Hinged Doors



inovarefrigeration  
by INOVA YAPI

### Usage areas :

Cold storage , Cold rooms ; Product freezing rooms , Shock production chambers , Hotels , Medicine Storage rooms , Medical materials & Waste plants , Air conditioning rooms , Food facilities such as meat , Cheese, Milk Production facilities, Warehouses, Factories, Painthouses, Women's health & beauty centers , Garbage processing plants , Morgues , Frigolu vehicles , Telecommunication base station centers , Hygiene areas , Restaurants Food production facilities, Pastries , Hot rooms , Gsm booths , Integrated production facilities , Pc server rooms, Vegetable & fruit processing plants, Pickles Tomato Paste production facilities , Hospitals , Operating theaters , Fish production & processing plants , Clearing stations , Chemical laboratories .

### Doors Special Solutions :

- Doors are easy & fast to mounted & easy to maintain
- The area to be used is produced according to your needs
- Includes special accessories developed according to every need
- It has a system to be installed according to each wall type
- It has the feature of keeping the thermal insulation at maximum level
- We use Package with strength packaging system
- Recessed type doors

### Environment and User Friendly :

- Clean design
- Does not contain bacteria
- Corrosion resistant
- High-pressure accessories
- Manufacturing with environmentally friendly products
- Maximum energy saving
- Durable materials
- High vapor proof sealing system
- Quiet and smooth operation

### Dimensions of Standard Model Doors :

75 cm width \* 180 cm High \* 80 mm / 100 mm (Optionally) thickness ( wing or blade size)  
90 cm width \* 190 cm High \* 80 mm / 100 mm (Optionally) thickness ( wing or blade size)  
100 cm width \* 200 cm High \* 80 mm / 100 mm (Optionally) thickness ( wing or blade size)  
110 cm width \* 190 cm High \* 80 mm / 100 mm (Optionally) thickness ( wing or blade size)

### Minimum and Maximum Door Dimensions :

Minimum : 40 cm Width \* 40 cm High \* 80 mm / 100 mm (Optionally) thickness (wing / blade size)  
Maximum : 1.5 m Width \* 3 m High \* 80 mm / 100 mm (Optionally) thickness (wing / blade size)

The maximum door dimensions are calculated by considering the load bearing system of the PVC frame  
Measures can be made in the desired size in the areas to be applied on-site.  
The prices vary for models other than standard size.



## TECHNICAL SPECIFICATIONS OF DOORS

**Room Temperature Range Door To Use** : NEGATIVE – 50 °C / POSITIVE 80 °C

**Door Type** : Monorail Hinged Door

**Door Wing Thickness** : 80 mm / 100 mm (Optionally)

**Door Wing Sheet Feature** : Door sheet are coatings with scratch protection surface with PVC films 100- 200  $\mu$  micron / 0,50 mm x 0,70 mm (minimum) Hot dipped galvanized coil coating painted steel 10142

**Door Wing Sheet Quality** : dx51d + z - EN 10327 - Standards

**Door Wing Insulation Features** : Polyol + Izocsiyanate = Polyurethane

**Insulation Density** : 40- 45 kg / m<sup>3</sup> - EN 1602 Standards

**Thermal Conductivity Coefficient** :  $\lambda = 0,022$  W/mK - EN 13162

**Fire Classification** : PUR- B-s1, d0 EN 13501-1 / PIR - B-s1, d0 EN 13501-1 ( Optionally )

**Door Wing Color Suggested** : Standard models Ral 9002 - PVDF ( Polyvinylidene Floride ) Painted Galvanized Sheet or if you want Different colors option your order should be over 30 pieces .

**Door Insulation Gaskets** : Double Density Component with Epdm & Pvc Combination. Suitable for use in the thermal temperature range between 65 °C & +150 °C. As used in food & living areas, it's in compliance with 21.CFR 177.2600 specifications & quality standards. Corner gaskets used by us for the first time in the world do not require welded gaskets. Withstep ( threshold ) & without step ( non threshold ) are Provides 100 % sealing on all models.

**Door Wing Case** : DIN 50049 - 2.2. / EN 10204- 3.1.B Standards. In Anodized aluminum profile.

**Door Lock (Handle)** : 100 % leak - proof & frost- free door lock that can be locked from the outside . PA 6.6 ( Poliamid 6.6 ) % 30 GF we manufacturing in standards. Dark rooms In order to detect the door lock & facilitate the output, it is marked with phosphorus (bright).

**Door Hinges** : The door hinges have a system that opens up when the door is opened & a downward system while closing. This system ensures maximum insulation of the door. The hinges can be used in different quantities according to the area to be used & at least 2 according to the door size. It works silently No sagging, No breaking.

**Door Front Frame** : In accordance with the working principles of Cold Storage, they are produced in maximum quality at aesthetic , ergonomic & flexible to be used at +80 °C / 60 °C- It is designed with 100 % German technology at doors with negative and + °C positive values. It is made of pvc raw material imported from 1st class quality according to European Norms . Cold room door frame is so strong that screw buldeks and bolt are applicat easily on the surface. The monorail channel is in the upper part of the front . It's applied as standard in the middle of the door . According to the monorail system located in the area where the door will be installed , a monorail channel can be opened with the special production technique.

**Door Rear Frame** : 2 types of rear moldings can be applied according to the wall thickness of the door to be mounted. It has 2 models in aluminum & PVC . Since the rear frames do not carry loads, they are applied only for image aesthetics.

**Door Opening System** : The hinged doors are only opened & closed manually .



**Resistance (Heating Cable)** : 220 Volt It can be connected directly .It can work within the range of- 70° C to + 200 ° C Maximum degree.( optionally ) .

**The Viewing Window** : Surveillance windows are the window system for viewing the inside & outside . Fiber glass is made of hard & transparent material & Epm flexible seals. 100% leak-proof ( optionally ) .

**Door Bumper Plate** : Aluminum or Pvc Thick absorber materials applied on the inside or outside of the door on the lower parts of the door in frequently used & impacted areas are called bumper. Bumpers are available as optional in cold room doors. In addition to aluminum material or PVC plate absorbers ,stainless steel 304 quality thick sheet application can be made .

**Optional door accessories** : Over 30 pieces. colors are Available, 304 quality chrome stainless sheet blade, Viewing window,Over 2 pieces of hinge, Bumper plate , PIR Polyurethane, Automatic door closers.

### MONORAIL SYSTEM :

With the heavy transport system such as meat , chicken , etc , hanger systems called monorail are used especially in the areas where product transitions are used with air suspension system & product transitions from outdoor units to indoor units .In monorail systems , In Monorail systems , it's desired to be close to the maximum level of insulation & easy transport of heavy product transitions is the main purpose. In order to operate the monorail system to be applied in the unit , the multiplication doors produced by finding a monorail channel suitable for our unit are called monorail type multiplication doors . Since monorail doors are different in every project in the World, each product can be produced according to the Project . Monorail doors are manufactured using hygienic materials in accordance with European standards . They do not undergo any deformation in all kinds of chemical disinfectant cleaning .

### ADVANTAGES OF SINGLE WING MONORAIL HINGED DOORS :

- Provides moderate thermal insulation .
- It can be opened more functional (such as by drag and carry) provides ease in the transition of heavy products .
- It provides to prevent heat losses by opening it to the desired extent during periods when big and heavy product loading will not be done .
- Has an aesthetic & ergonomic look .
- Saves time and space .
- One-wing application saves cost thanks to its functional suitability in required areas .
- to the monorail channel , hanging system provides maximum convenience for product transportations .
- For monorail doors , the only disadvantage is that the monorail cannot be closed 100%, resulting in minimum heat losses.



**MONORAIL SYSTEM HINGED DOORS**  
Technical Specifications of Aluminum Case &  
PVC Frame - Monorail Channel (Hinged) DOORS

**Hinged Doors**



PVC FRAME :

Without Step Pvc Frame



Screw



Screw hiding cover

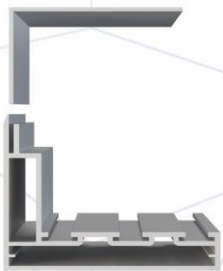
PVC  
Frame

1

2

3

Back Frame



Front Frame

Without Step



PVC FRAME :

With Step Pvc Frame



Screw



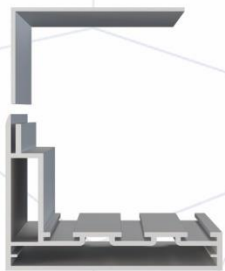
Screw hiding cover

PVC  
Frame

2

3

Back Frame



Front Frame

With Step

