

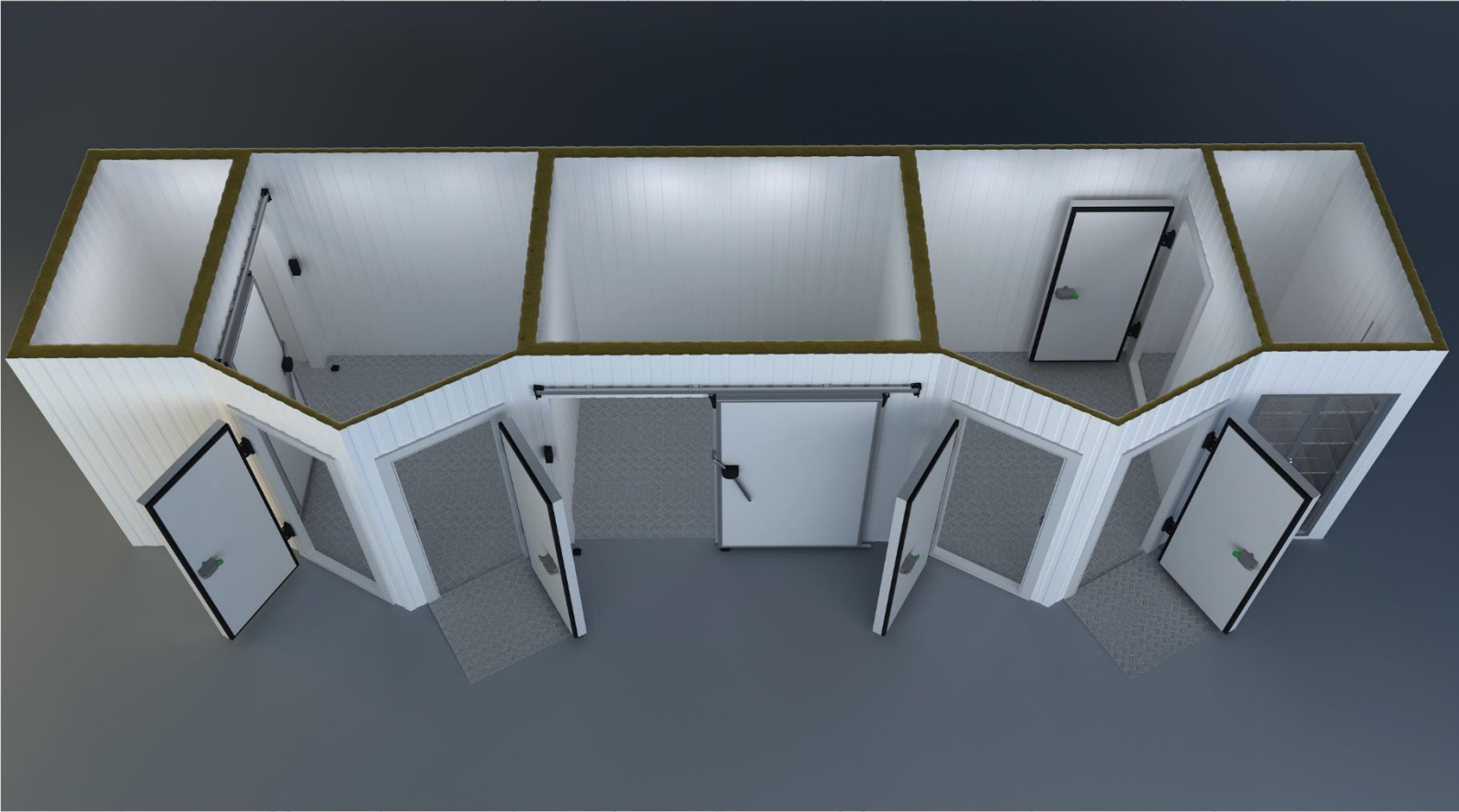


COLD ROOM DOOR & ACCESSORIES MONORAIL FLIP FLAP (Swing) Doors



inovarefrigeration
by INOVA YAPI

INOVA REFRIGERATION DOOR AND ACCESSORIES



Inova Group :

Since its inception, it has Reached More Than 10,000 Customers Worldwide & We Manufactured Than More 80,000 Doors.

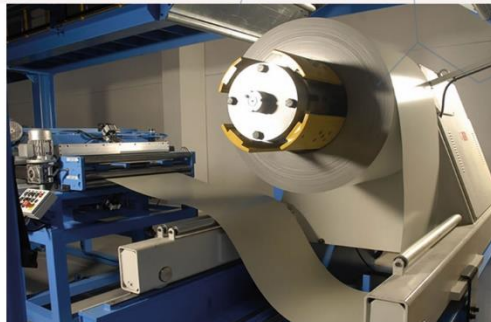
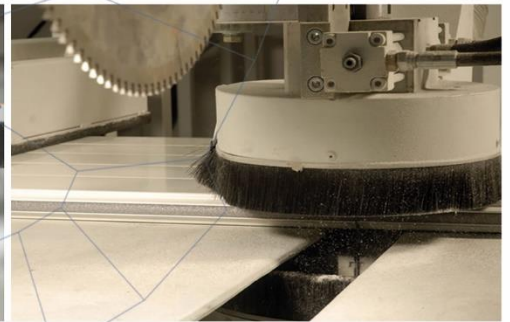
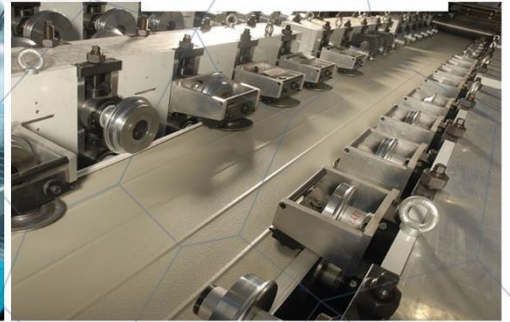
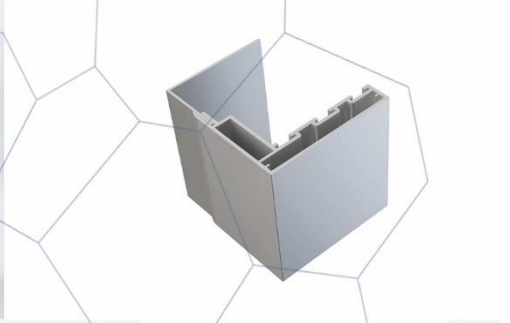
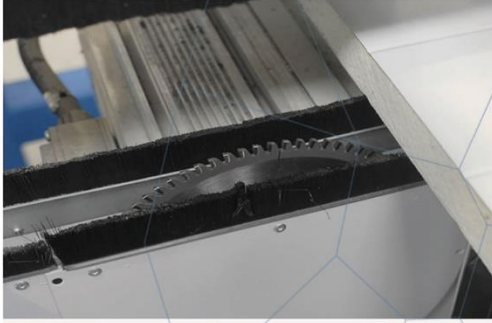
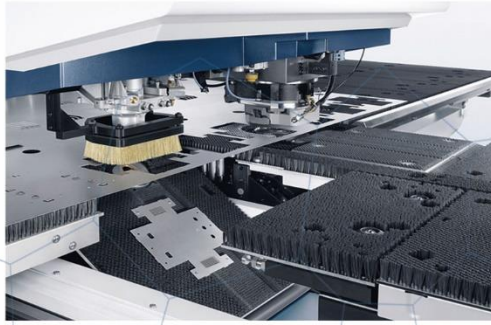
Our Production of Turkey :

Sliding Door With Personal Door , Folding Service Door , Double Wings of Sliding Door & With These Doors We Manufactured Hinged Door , Sliding Door ,FlipFlap Door ,Service Door & Monorail System INOVA GROUP Aims to Keep Customer Satisfaction at Maximum Level With its Quality & Service Import – Export – Production – Marketing - Sales & After - Sales Services Constitute Our Main Activity Structure .

IF YOU GIVE IMPORTANCE TO CUSTOMER YOU WILL BE THE MOST VALUABLE BRAND OF WORLD..

Inova Group Continues to Action With This Mission.

INOVA DOOR AND ACCESSORIES SYSTEMS



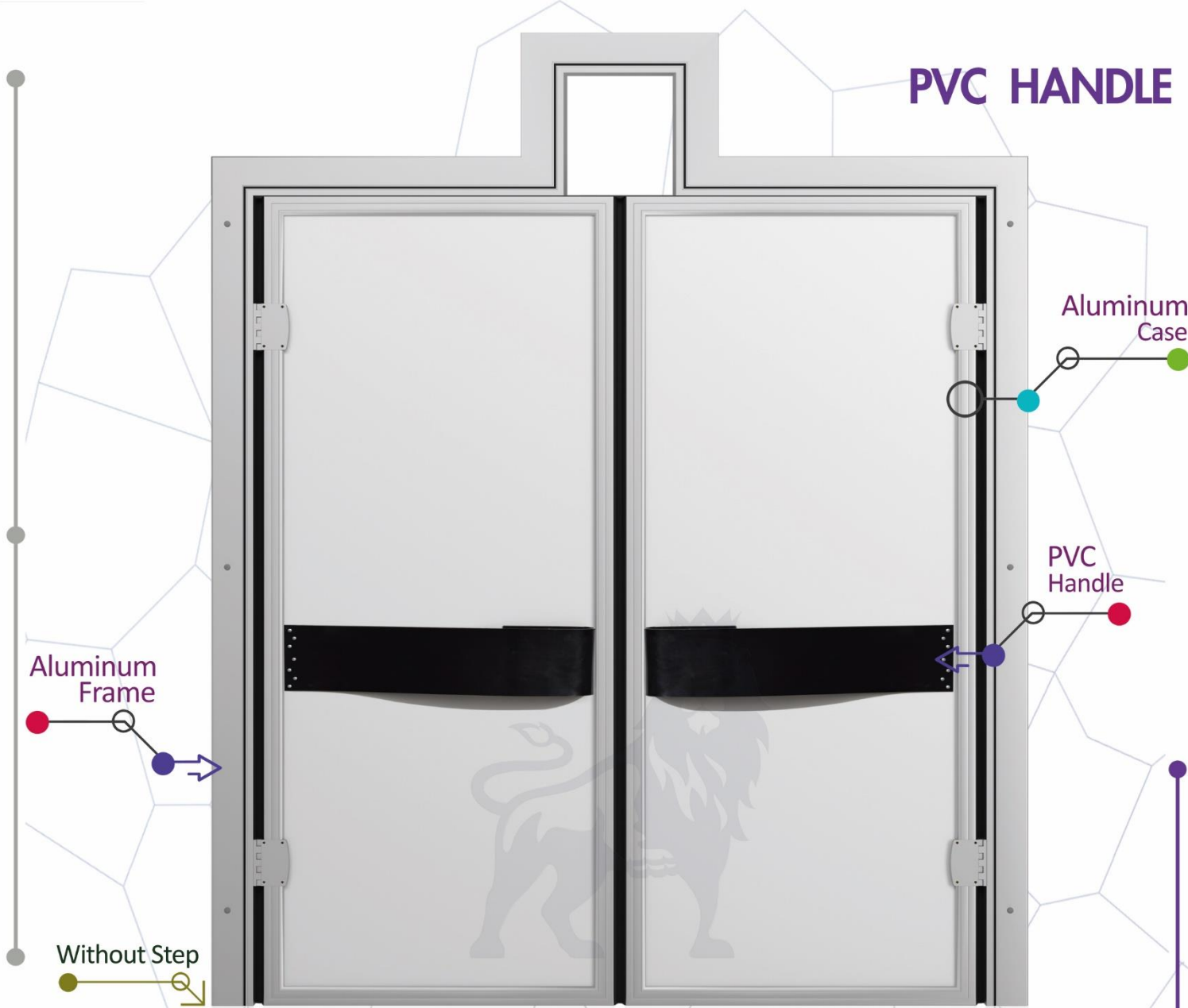
inovarefrigeration
by INOVA YAPI



THE DOORS WITH INSULATING, FILLED WITH POLYURETHANE, ISOTHERMIC - HINGED AND SLIDING DOORS-TWO LEAVES SLIDING DOORS- SLIDING DOORS WITH PERSONAL DOOR MONORAIL TYPE DOORS USAGE AREAS;



- Cold storage
- Cold rooms
- Modular cold plants
- Walk-in freezer rooms
- Vehicles with cold dorse
- Cold product protection rooms
- Shock freezing chambers
- Climating rooms
- Medical materials and waste plants
- The facilities that apply polyurethane
- Factories
- Health and beauty facilities
- Hotels
- Hospitals
- Restaurants
- Chemical laboratories
- Gsm
- Telecominication
- Morgues
- Operation rooms
- Units in which insulation and hygiene are required



COLD ROOM DOOR & ACCESSORIES MONORAIL FLIP FLAP (Swing) Doors



inovarefrigeration
by INOVA YAPI

Usage areas :

Cold storage , Cold rooms ; Product freezing rooms , Shock production chambers , Hotels , Medicine Storage rooms , Medical materials & Waste plants , Air conditioning rooms , Food facilities such as meat , Cheese, Milk Production facilities, Warehouses, Factories, Paintshops, Women's health & beauty centers , Garbage processing plants , Morgues , Frigolux vehicles , Telecommunication base station centers , Hygiene areas , Restaurants Food production facilities, Pastries , Hot rooms , Gsm booths , Integrated production facilities , Pc server rooms, Vegetable & fruit processing plants, Pickles Tomato Paste production facilities , Hospitals , Operating theaters , Fish production & processing plants , Clearing stations , Chemical laboratories .

Doors Special Solutions :

- Doors are easy & fast to mounted & easy to maintain
- The area to be used is produced according to your needs
- Includes special accessories developed according to every need
- It has a system to be installed according to each wall type
- It has the feature of keeping the thermal insulation at maximum level
- We use Package with strength packaging system
- Flip Flap doors are produced embedded inside the moldings
- Opens in both directions

Environment and User Friendly :

- Clean design
- Does not contain bacteria
- Corrosion resistant
- High-pressure accessories
- Manufacturing with environmentally friendly products
- Maximum energy saving
- Durable materials
- High vapor proof sealing system
- Quiet and smooth operation

Dimensions of Standard Model Doors :

In general, sliding door models are not standard in the world.

Minimum and Maximum Door Dimensions :

Minimum : 50 cm Width * 50 cm High * 40 mm thickness (wing / blade size)

Maximum : 120 cm Width * 250 cm High * 40 mm thickness (wing / blade size)

Maximum : 250 cm Width * 120 cm High * 40 mm thickness (wing / blade size)

Maximum door dimensions can be made by considering the international transportation standards.

Measures can be made in the desired size in the areas to be applied on-site.

Maximum dimensions can be increased for Opentop containers and truck transport



TECHNICAL SPECIFICATIONS OF DOORS :

Room temperature range door to use	: NEGATIVE- 50C / POSITIVE 80 ° C
Door type	: Double wings Monorail Flip Flap door
Door Blade (wing) Thickness	: 40 mm
Door Blade (wing) sheet feature	: Door sheet are coatings with scratch protection surface with PVC films 100-200 μ micron / 0,50 mm x 0,70 mm (minimum) hot dipped galvanized coil coating painted steel 10142
Door Blade (wing) sheet quality	: dx51d + z- EN 10327- Standards
Door Blade (wing) insulation features	: Polyol + Izocsiyanate = Polyurethane
Insulation density	: 40- 45 kg / m ³ - EN 1602 Standards
Thermal Conductivity Coefficient	: λ = 0,022 W/mK - EN 13162
Fire Classification	: PUR- B-s1, d0 EN 13501-1/PIR B-s1, d0 EN 13501-1 (optionally)
Door Blade (wing) color suggested	: Standard models Ral 9002- Different colors optional PVDF (Polyvinylidene Floride) Painted Galvanized sheet
Door Insulation Gaskets	: Double Density Component with Epdm & Pvc Combination Suitable for use in the thermal temperature range between 65 ° C & + 150 ° C . As used in food & living areas , it's in compliance with 21.CFR 177.2600 specifications & quality standards Can be produced without Step(threshold) or with Step (threshold) type
Door wing (blade) Case in Anodized aluminum profile	: DIN 50049-2.2./EN 10204-3.1.B Standards.
Door Handle	: Standard 2 type door handle application is done in the bar doors.1. Polyethylene release arm manufactured in accordance with the TS EN ISO 14632 Quality system in compliance with HACCP standards & food safety management system according to DIN EN ISO 22000: 2005 production standards 2. Anodized aluminum release lever is applied to DIN 50049-2.2./EN 10204-3.1.B. Due to the fact that the doors are opened & closed by the impact & impact method throughout the world, mostly polyethylene arms are preferred due to their flexible structure.
Door hinges	: Flip Flap door hinges are produced in PA 6.6 (Polyamide 6.6) 30% GF standards. Polyamide visible hinges have stainless steel springs . Flip Flap door hinges provide opening & closing of doors in both directions of 90 ° C while 90 ° C is to be fixed on which side you want . Such doors are preferred in intermediate compartments where it is preferable to open the door by touching the desired location without frequent contact with passages. Hinges can be used according to the area & door size in both wings, at least 2 pieces separately. It works silently. Does not sag, no breaking.
Door Front Frame	: 100 % German design against DIN 50049-2.2. / EN 10204-3.1.B maximum heat insulation polyamide barrier aluminum Frame.
Door Rear frame	: 2 types of rear moldings can be applied according to the wall thickness of the door to be mounted . It has 2 models in aluminum & PVC. Since the rear frames do not carry loads , they are applied only for image aesthetics.



Door opening system

: The Flip Flap doors are only opened closed manually.

Resistance (heating cable)

(cable) is optional.

: The Flip Flap doors on standard system resistance (Heating

The viewing Window

inside & outside . Fiber glass is made of hard & transparent material & epdm flexible seals 100% leak - proof (Optional).

: Surveillance windows are the window system for viewing the

Door bumper plate

inside or outside of the door on the lower parts of the door in frequently used & impacted areas are called bumper bumpers are available as optional in cold room doors . In addition to aluminum material or PVC plate absorbers, stainless steel 304 quality thick sheet application can be made.

: Aluminum or Pvc Thick absorber materials applied on the

Optional door accessories

- : Over 30 pieces. colors are Available
- 304 quality stainless sheet blade
- Viewing window
- Over 2 pieces of hinge
- Bumper plate
- PIR Polyurethane
- Resistance (heating cable)

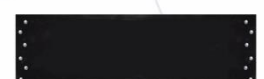


Aluminum Handle

Door Bumper Plate
Stainless steel 304



Door Bumper Plate PVC



Door Bumper Plate
Aluminum

