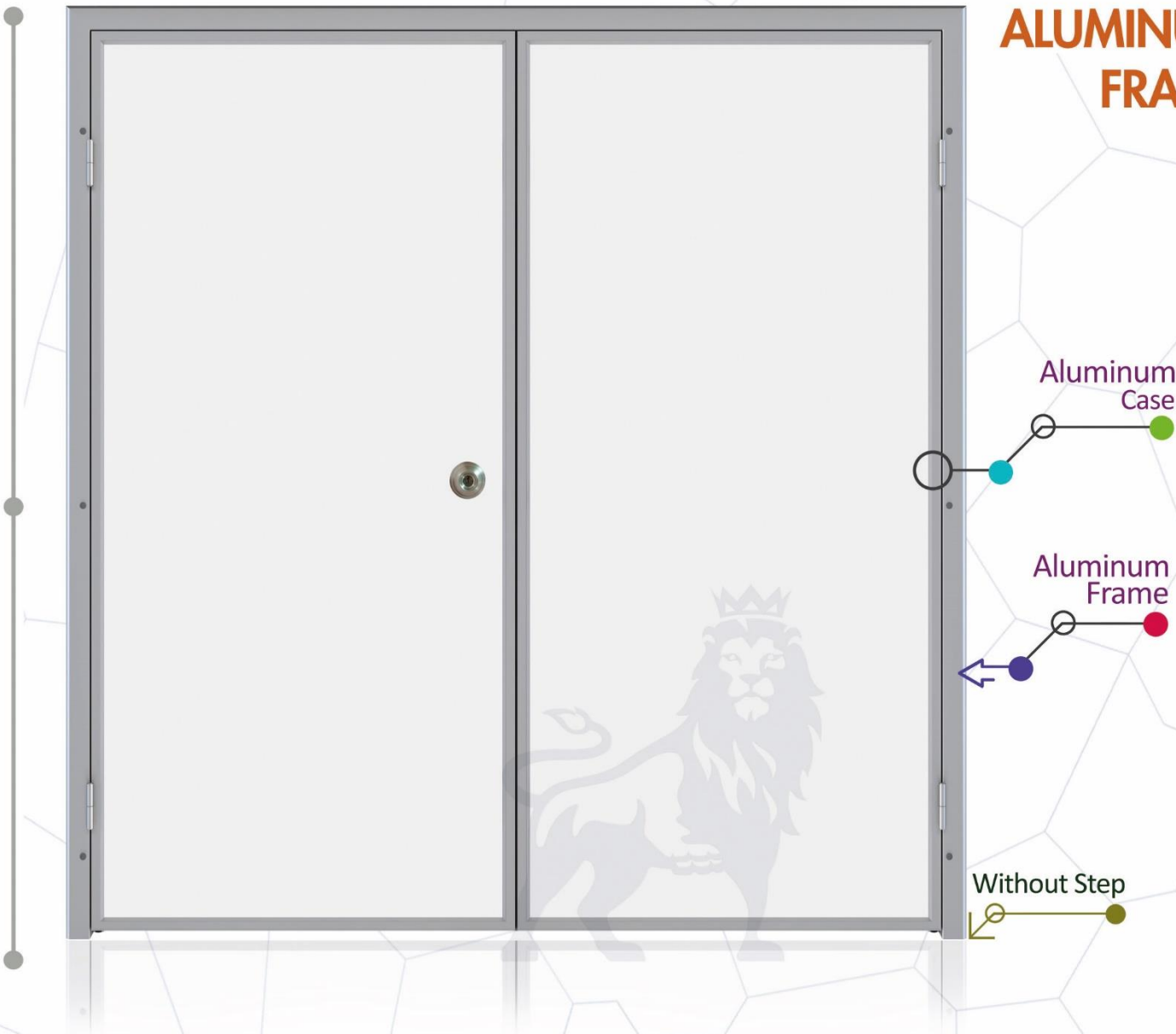


# ALUMINUM FRAME

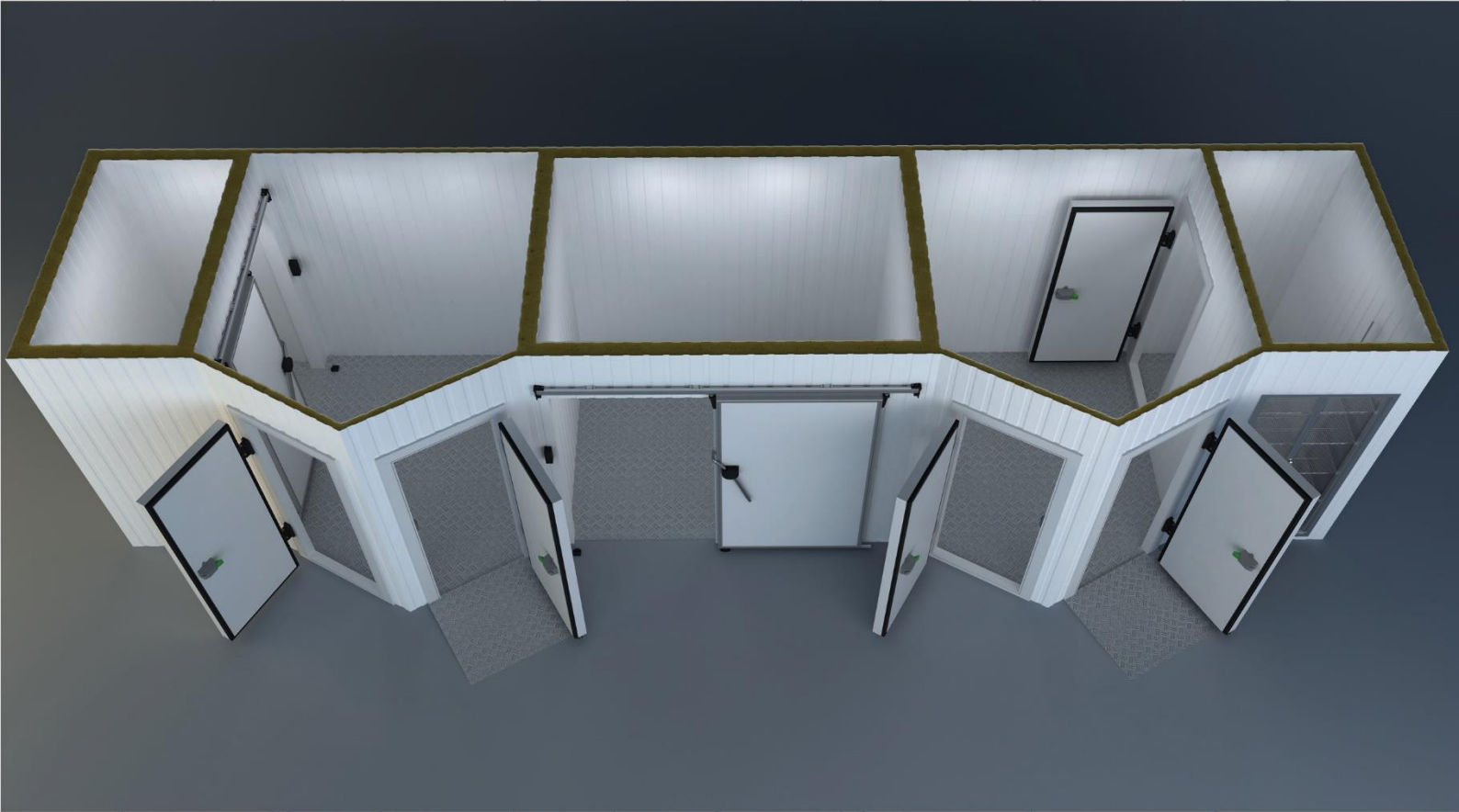


## COLD ROOM DOOR & ACCESSORIES FOLDING Service and Factory Doors



**inovarefrigeration**  
by INOVA YAPI

# INOVA REFRIGERATION DOOR AND ACCESSORIES



## Inova Group :

Since its inception, it has Reached More Than 10,000 Customers Worldwide & We Manufactured Than More 80,000 Doors.

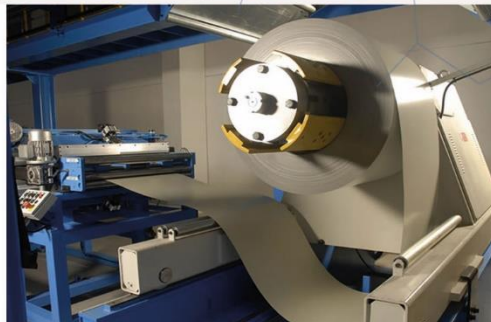
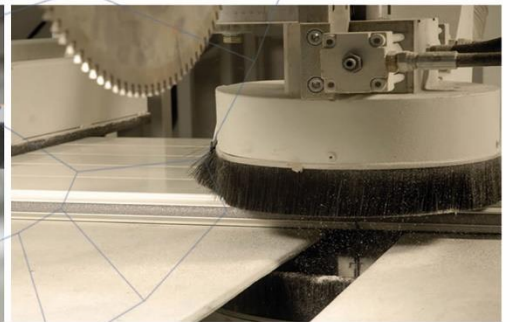
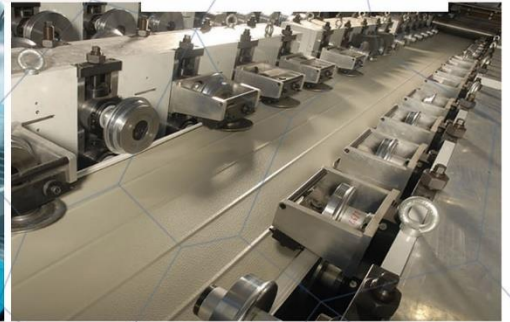
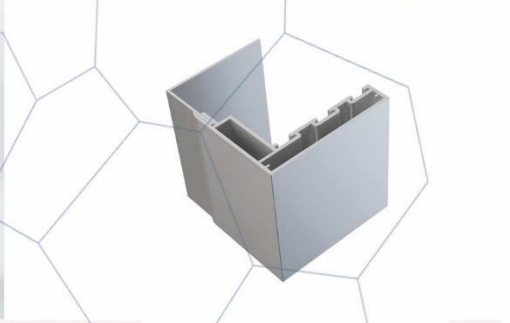
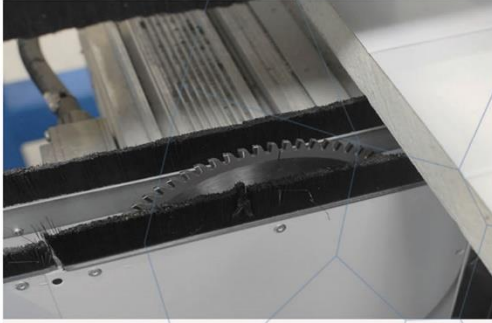
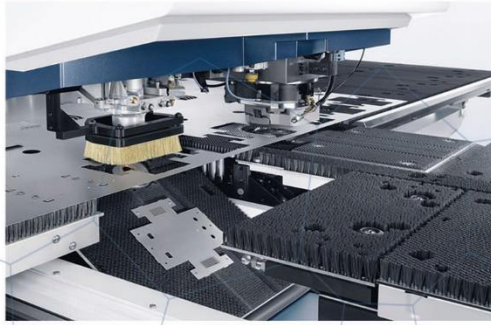
## Our Production of Turkey :

Sliding Door With Personal Door , Folding Service Door , Double Wings of Sliding Door & With These Doors We Manufactured Hinged Door , Sliding Door ,FlipFlap Door ,Service Door & Monorail System INOVA GROUP Aims to Keep Customer Satisfaction at Maximum Level With its Quality & Service Import – Export – Production – Marketing - Sales & After - Sales Services Constitute Our Main Activity Structure .

IF YOU GIVE IMPORTANCE TO CUSTOMER YOU WILL BE THE MOST VALUABLE BRAND OF WORLD..

Inova Group Continues to Action With This Mission.

# INOVA DOOR AND ACCESSORIES SYSTEMS



**inovarefrigeration**  
by INOVA YAPI



THE DOORS WITH INSULATING, FILLED WITH POLYURETHANE, ISOTHERMIC - HINGED AND SLIDING DOORS-TWO LEAVES SLIDING DOORS- SLIDING DOORS WITH PERSONAL DOOR MONORAIL TYPE DOORS USAGE AREAS;



- Cold storage
- Cold rooms
- Modular cold plants
- Walk-in freezer rooms
- Vehicles with cold dorse
- Cold product protection rooms
- Shock freezing chambers
- Climating rooms
- Medical materials and waste plants
- The facilities that apply polyurethane
- Factories
- Health and beauty facilities
- Hotels
- Hospitals
- Restaurants
- Chemical laboratories
- Gsm
- Telecominication
- Morgues
- Operation rooms
- Units in which insulation and hygiene are required

### Usage areas :

Cold storage , Cold rooms ; Product freezing rooms , Shock production chambers , Hotels , Medicine Storage rooms , Medical materials & Waste plants , Air conditioning rooms , Food facilities such as meat , Cheese, Milk Production facilities, Warehouses, Factories, Painthouses, Women's health & beauty centers , Garbage processing plants , Morgues , Frigolu vehicles , Telecommunication base station centers , Hygiene areas , Restaurants Food production facilities, Pastries , Hot rooms , Gsm booths , Integrated production facilities , Pc server rooms, Vegetable & fruit processing plants, Pickles Tomato Paste production facilities , Hospitals , Operating theaters , Fish production & processing plants , Clearing stations , Chemical laboratories .

### Doors Special Solutions :

- Doors are easy & fast to mounted & easy to maintain
- The area to be used is produced according to your needs
- Includes special accessories developed according to every need
- It has a system to be installed according to each wall type
- It has the feature of keeping the thermal insulation at maximum level
- We use Package with strength packaging system
- Service doors are produced embedded inside the moldings
- Suitable for factory living areas

### Environment and User Friendly :

- Clean design
- Does not contain bacteria
- Corrosion resistant
- High-pressure accessories
- Manufacturing with environmentally friendly products
- Maximum energy saving
- Durable materials
- High vapor proof sealing system
- Quiet and smooth operation

### Dimensions of Standard Model Doors :

In general, double leaf hinged doors models are not standard in the world.

### Minimum and Maximum Door Dimensions :

Minimum : 200 cm Width \* 100 cm High \* 40 mm thickness (wing / blade size)  
Maximum : 800 cm Width \* 650 cm High \* 40 mm thickness (wing / blade size)

Maximum door dimensions can be made by considering the international transport standards.  
Measures can be made in the desired size in the areas to be applied on-site.  
Maximum dimensions can be increased for Opentop containers and truck transport



## TECHNICAL SPECIFICATIONS OF DOORS

**Room Temperature Range Door To Use** : NEGATIVE – 50 °C / POSITIVE 80 °C

**Door Type** : Folding Service and Factory door

**Door Wing Thickness** : 40 mm

**Door Wing Sheet Feature** : Door sheet are coatings with scratch protection surface with PVC films  
100- 200  $\mu$  micron / 0,50 mm x 0,70 mm (minimum) Hot dipped galvanized coil coating painted steel 10142

**Door Wing Sheet Quality** : dx51d + z - EN 10327 - Standards

**Door Wing Insulation Features** : Polyol + Izocsiyanate = Polyurethane

**Insulation Density** : 40- 45 kg / m<sup>3</sup> - EN 1602 Standards

**Thermal Conductivity Coefficient** :  $\lambda = 0,022$  W/mK - EN 13162

**Fire Classification** : PUR- B-s1, d0 EN 13501-1 / PIR - B-s1, d0 EN 13501-1 ( Optionally )

**Door Wing Color Suggested** : Standard models Ral 9002 - PVDF ( Polyvinylidene Floride ) Painted  
Galvanized Sheet or if you want Different colors option your order should be over 30 pieces .

**Door Insulation Gaskets** : Double Density Component with Epdm & Pvc Combination.Suitable for  
use in the thermal temperature range between 65 ° C & +150 ° C. As used in food & living areas, it's  
in compliance with 21.CFR 177.2600 specifications & quality standards. Corner gaskets used by us for the  
first time in the world do not require welded gaskets .Withstep ( threshold ) & without step (non threshold) are  
Provides 100 % sealing on all models.

**Door Wing Case** : DIN 50049 - 2.2. / EN 10204- 3.1.B Standards. In Anodized aluminum  
profile.

**Door Lock (Handle)** : The door can be applied in different models according to the areas to  
be used, but as standard , round stainless arm is applied.

**Door Hinges** : TDIN 50049-2.2./EN 10204-3.1.B Anodized aluminum hinges are used  
as standard in the service doors . The hinges can be used in different quantities according to the area to be used  
& at least 2 according to the door size . It works silently Does not sag , no breaking . Service Doors open in one  
direction only to our side.

**Door Front Frame** : 100 % German design against DIN 50049- 2.2. / EN 10204 - 3.1.B  
maximum heat insulation polyamide barrier Aluminum Frame.

**Door Rear Frame** : According to the wall thickness of the area to be installed according to  
DIN 50049-2.2./EN 10204-3.1.B Standards anodized aluminum back mold application is made . Since the rear  
frames do not carry loads , they are only applied for image aesthetics.

**Door Opening System** : The hinged doors are only opened & closed manually .



**The Viewing Window** : Surveillance windows are the window system for viewing the inside & outside . Fiber glass is made of hard & transparent material & Epdm flexible seals. 100% leak-proof ( optionally ) .

**Door Bumper Plate** : Aluminum or Pvc Thick absorber materials applied on the inside or outside of the door on the lower parts of the door in frequently used & impacted areas are called bumper. Bumpers are available as optional in cold room doors. In addition to aluminum material or PVC plate absorbers ,stainless steel 304 quality thick sheet application can be made .

**Optional door accessories** : Over 30 pieces. colors are Available, 304 quality chrome stainless sheet blade, Viewing window,Over 2 pieces of hinge, Bumper plate , PIR Polyurethane, Automatic door closers.



Door Bumper Plate  
Aluminum

Door Bumper Plate  
stainless steel 304



Door Bumper Plate  
PVC



**inovarefrigeration**



**iNOVA YAPI LTD STi.**

Mehmet Akif Cad.No:41 Kısıkköy-Menderes-İzmir / Turkey



Phone : 00 90 232 257 56 70  
Fax : 00 90 232 257 52 60  
Mobile : 00 90 530 948 42 35



[www.inovayapi.com](http://www.inovayapi.com)  
[info@inovayapi.com](mailto:info@inovayapi.com)

**inovarefrigeration**  
by INOVA YAPI