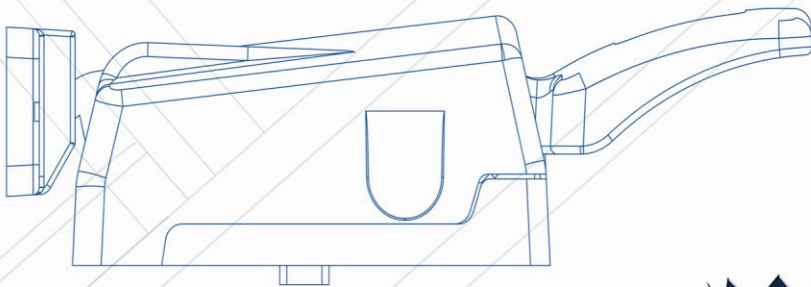
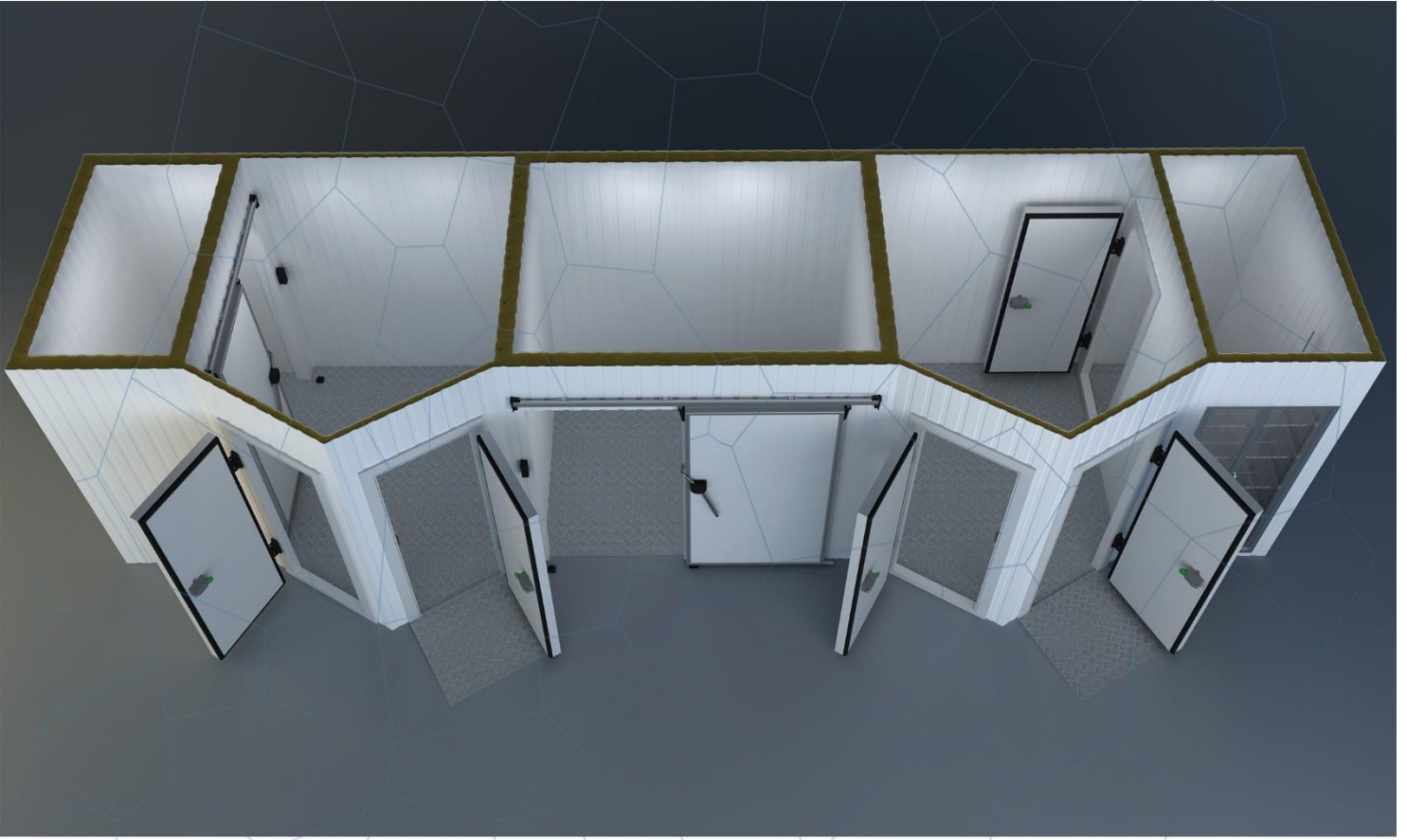


# COLD ROOM FLIP-FLAP DOOR ACCESSORIES



# INOVA REFRIGERATION DOOR AND ACCESSORIES



Inova Group :

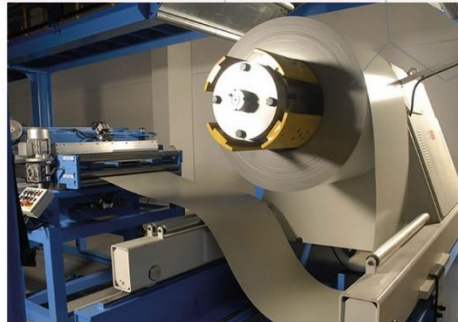
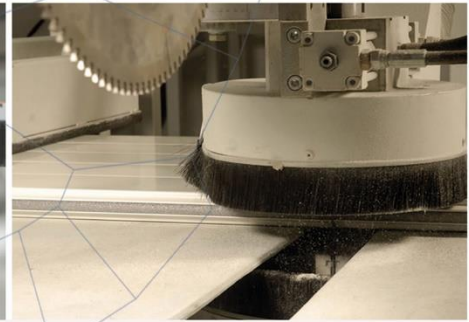
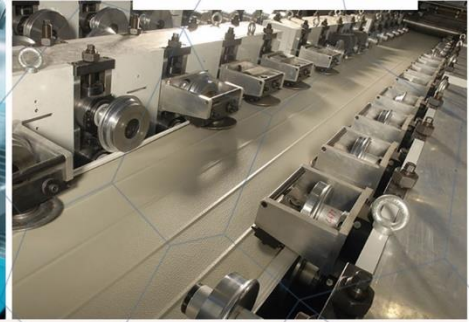
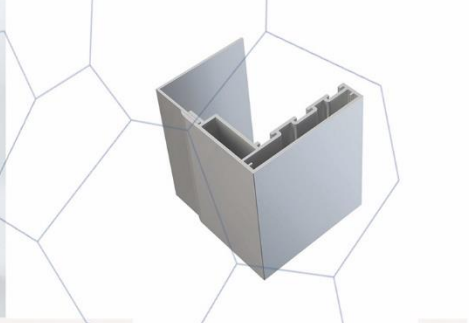
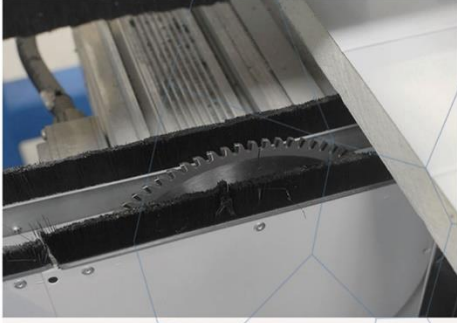
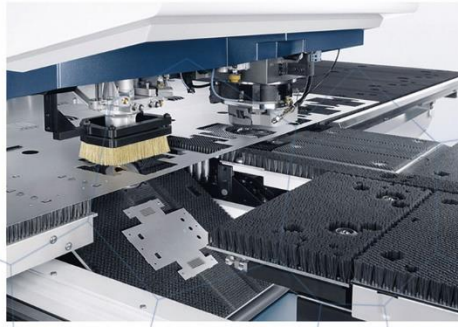
Since its inception, it has Reached More Than 10,000 Customers Worldwide & We Manufactured Than More 80,000 Doors.

Our Production of Turkey :

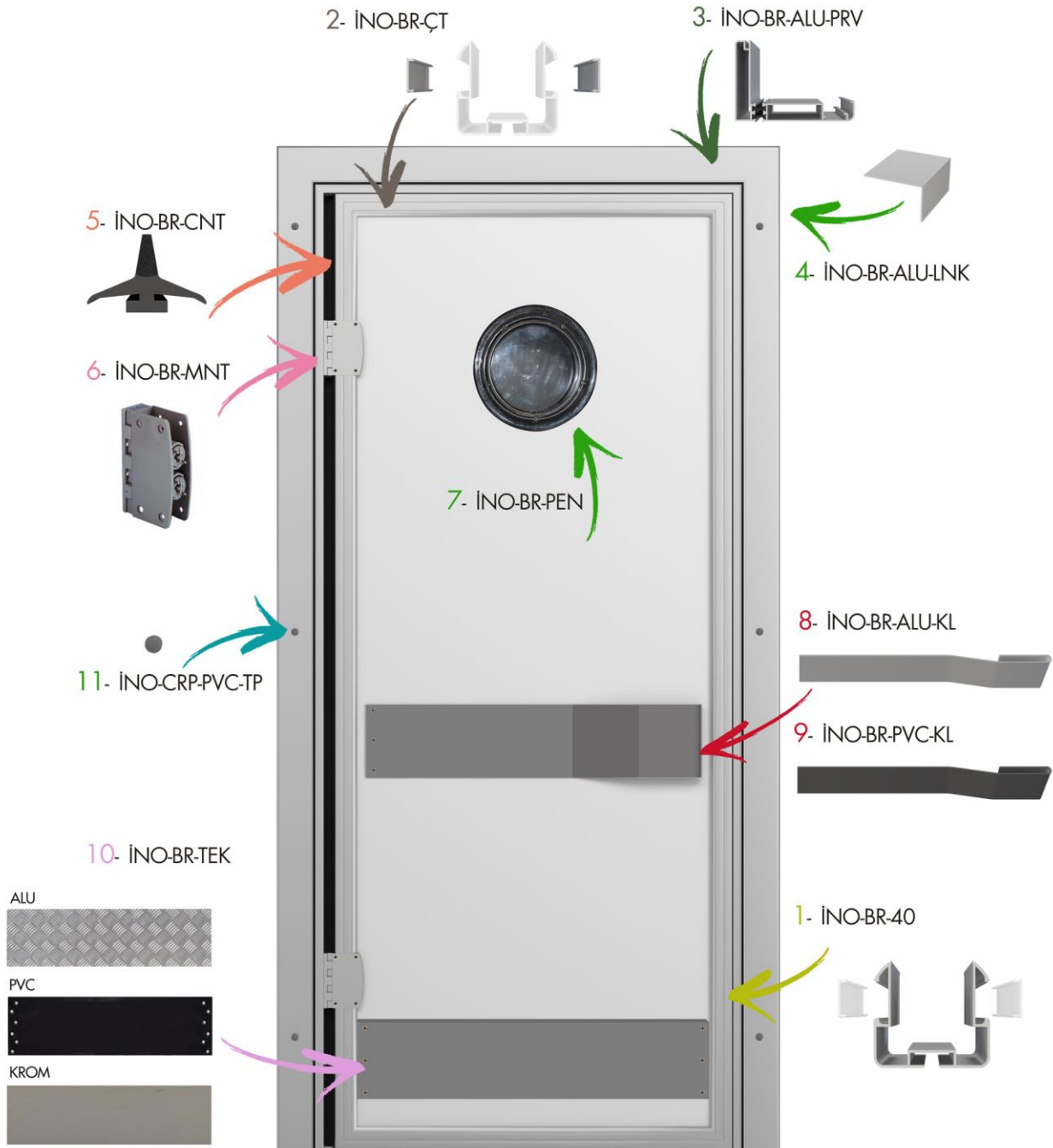
Sliding Door With Personal Door , Folding Service Door , Double Wings of Sliding Door & With These Doors We Manufactured Hinged Door , Sliding Door ,FlipFlap Door ,Service Door & Monorail System INOVA GROUP Aims to Keep Customer Satisfaction at Maximum Level With its Quality & Service Import – Export – Production – Marketing - Sales & After - Sales Services Constitute Our Main Activity Structure .

IF YOU GIVE IMPORTANCE TO CUSTOMER YOU WILL BE THE MOST VALUABLE BRAND OF WORLD..

Inova Group Continues to Action With This Mission.



# FLIP FLAP DOOR ACCESSORIES



# FLIP FLAP DOOR ACCESSORIES

## INO-BR-40



FlipFlap Door Case Around The Wings of Sliding Door DIN 50049-2.2./EN 10204-3.1.B. Standard Anodized Aluminum Profile We Use . ( it's for 40 mm door thickness )

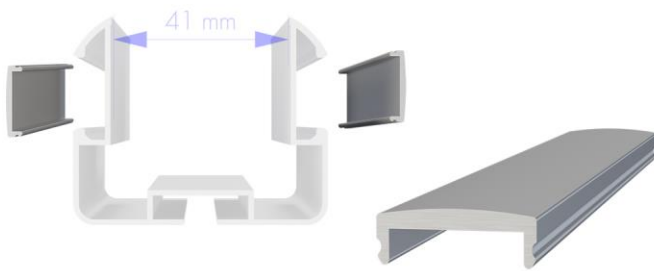
### CHEMICAL COMPOSITION

Fe ( Iron )	Si (Silisium)	Cu (Copper)	Mn (Manganese)	Mg (Magnesium)	Zn (Zinc)	Ti (Titanium)	Cr (Chrome)	AL (Aluminum)
0,10-0,30	0,30-0,60	0,1	0,1	0,35-0,60	0,15	0,1	0,05	Remaining
0,17	0,42	0,01	0,03	0,47	0,01	0,01	0,01	98,8

### MECHANICAL PROPERTIES

Rupture Strength Rm (N/mm <sup>2</sup> ) min.215	Yield Strength Rp 0,2 (N/mm <sup>2</sup> )min.170	Elongation A 50 mm (%)min.6	Brinel HB min.70
216	171	7	70

## INO-BR-CT



Around The FlipFlap Door Wings internally & externally DIN 50049-2.2./EN 10204-3.1.B. Standard Anodized Aluminum Profile We Use .

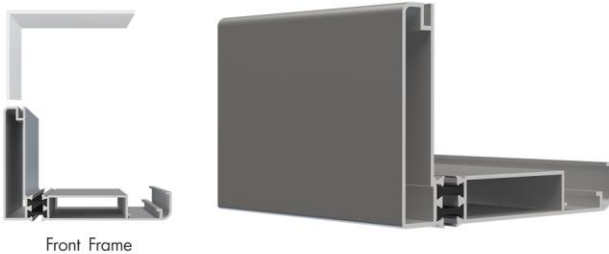
### CHEMICAL COMPOSITION

Fe ( Iron )	Si (Silisium)	Cu (Copper)	Mn (Manganese)	Mg (Magnesium)	Zn (Zinc)	Ti (Titanium)	Cr (Chrome)	AL (Aluminum)
0,10-0,30	0,30-0,60	0,1	0,1	0,35-0,60	0,15	0,1	0,05	Remaining
0,17	0,42	0,01	0,03	0,47	0,01	0,01	0,01	98,8

### MECHANICAL PROPERTIES

Rupture Strength Rm (N/mm <sup>2</sup> ) min.215	Yield Strength Rp 0,2 (N/mm <sup>2</sup> )min.170	Elongation A 50 mm (%)min.6	Brinel HB min.70
216	171	7	70

## INO-BR-ALU-PRV



Front Frame

Flip Flap door front frame . This frame is attached between the Wing & the unit to be installed . Aluminium DIN 50049.2.2. / EN 10204-3.1.B Standard anodized coated aluminum .

### CHEMICAL COMPOSITION

Fe ( Iron )	Si (Silisium)	Cu (Copper)	Mn (Manganese)	Mg (Magnesium)	Zn (Zinc)	Ti (Titanium)	Cr (Chrome)	AL (Aluminum)
0,10-0,30	0,30-0,60	0,1	0,1	0,35-0,60	0,15	0,1	0,05	Remaining
0,17	0,42	0,01	0,03	0,47	0,01	0,01	0,01	98,8

### MECHANICAL PROPERTIES

Rupture Strength Rm (N/mm <sup>2</sup> ) min.215	Yield Strength Rp 0,2 (N/mm <sup>2</sup> )min.170	Elongation A 50 mm (%)min.6	Brinel HB min.70
216	171	7	70

## INO-BR-ALU-LNK



Arka Pervaz

FlipFlap Door Rear frame . This frame is Rear Wall frame which fixed With Front Wall Frame . Aluminium DIN 50049.2.2. / EN 10204-3.1.B Standard anodized coated aluminum .

### CHEMICAL COMPOSITION

Fe ( Iron )	Si (Silisium)	Cu (Copper)	Mn (Manganese)	Mg (Magnesium)	Zn (Zinc)	Ti (Titanium)	Cr (Chrome)	AL (Aluminum)
0,10-0,30	0,30-0,60	0,1	0,1	0,35-0,60	0,15	0,1	0,05	Remaining
0,17	0,42	0,01	0,03	0,47	0,01	0,01	0,01	98,8

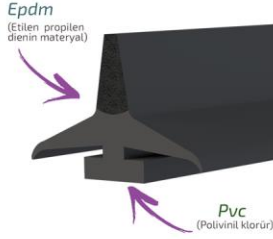
### MECHANICAL PROPERTIES

Rupture Strength Rm (N/mm <sup>2</sup> ) min.215	Yield Strength Rp 0,2 (N/mm <sup>2</sup> )min.170	Elongation A 50 mm (%)min.6	Brinel HB min.70
216	171	7	70



# FLIP FLAP DOOR ACCESSORIES

## İNO-BR-CNT



Flip Flap Door Wing bottom Gasket used for insulation on the underside of the door Wing It is made of Epdm & PVC rubber. it's in compliance with 21.CFR 177.2600 specifications & quality standards .

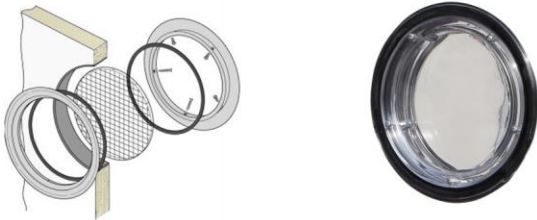
## İNO-BR-MN



Flip Flap Door Hinges We Use to connect between the door wing with the door Frame ISO 9001: 2008- GHP good hygiene practices standard PA 6.6 ( Poliamid 6.6 ) % 30 GF we are manufactured Consists of chrome spring and steel hangers.

Mekaniksel Özellikler	Polamid 66	Plastik Türü	Poliamid 66
Sembol	PA 66	Elektriksel Özellikler	
Yoğunluk (g/cm <sup>3</sup> )	1.13 - 1.15	Sembolu	PA 66
Kopma Mukavemeti (Mpa)	66-86	Spesifik Direnc (ohm.cm)	10 <sup>12</sup> - 10 <sup>13</sup>
Kopma Uzaması (%)	30-300	Yüzey Direnci (ohm)	10 <sup>10</sup> - 10 <sup>13</sup>
Eğilme Mukavemeti (Mpa)	80-105	Dielektrik Sabiti (10 <sup>8</sup> Hz)	03.04.2005
Basma Mukavemeti (Mpa)	70-100	Dielektrik Kayıp Faktörü (10 <sup>8</sup> Hz)	0.03 - 0.2
Darbe Mukavemeti (çentikli) (J/cm)	0.43-1.14	Dielektrik Direnci (KV / mm)	20-150
Elastik Modül (çekmede) (Mpa)	1000-2800	Termal Özellikler	
Elastik Modül (eğilmede) (Mpa)	2000-3400	Kristal Erime veya Amorf Yumuşama Noktası (°C)	255-265
Elastik Modül (basmada) (Mpa)	-	Yük Altında Deformasyon Sıcaklığı (°C)	75-180
Sertlik		Maksimum Çalışma Sıcaklığı (°C) Uzun-kısa süre	90-180
Rockwell R	108-120	Spesifik Isı (cal/gr °C)	0.40-0.41
Rockwell M	83-89	Isıl Genleşme Katsayısı (x10 <sup>6</sup> cm/cm °C)	70-100
Shore D		Isıl İletkenlik Katsayısı (x10 <sup>7</sup> cal / sn. cm. °C)	4.8 - 5.8
Sürtünme Katsayısı	0.15-0.42	Yanıcılık	V2
Havadan Aldığı Nem (%)	2.4-3.0	Yanma Hızı	Kendi Kendine Söner

## İNO-BR-PEN



Flip Flap door Viewing Window .It is a system for seeing inside & outside .Made of fiberglass which production on hard & transparent material & Epdm flexible seals 100% leak proof.

## İNO-BR-ALU-KL



Flip Flap Aluminium Door Handle Flip Flap Handles are applied on the door Wing . it can be installed Internal & external lock Aluminium DIN 50049.2.2./EN 10204-3.1.B Standard anodized coated aluminum .

CHEMICAL COMPOSITION								
Fe ( Iron )	Si (Silium)	Cu (Copper)	Mn (Manganese)	Mg (Magnesium)	Zn (Zinc)	Ti (Titanium)	Cr (Chrome)	AL (Aluminum)
0,10-0,30	0,30-0,60	0,1	0,1	0,35-0,60	0,15	0,1	0,05	Remaining
0,17	0,42	0,01	0,03	0,47	0,01	0,01	0,01	98,8

MECHANICAL PROPERTIES			
Rupture Strength Rm (N/mm <sup>2</sup> ) min.215	Yield Strength Rp 0,2 (N/mm <sup>2</sup> )min.170	Elongation A 50 mm (%)min.6	Brinel HB min.70
216	171	7	70



# BAR ( FLIP FLAP ) KAPI

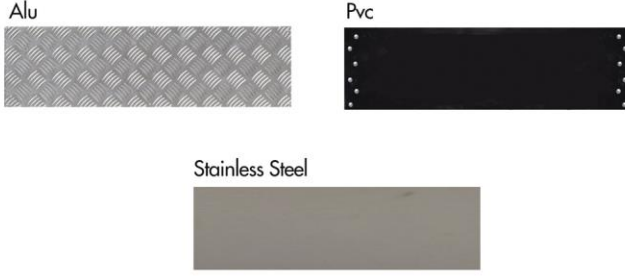
## İNO-BR-PVC-KL



Flip Flap Aluminium Door Handle Flip Flap Handles are applied on the door Wing . it can be installed Internal & external lock.ISO 9001: 2008- GHP good hygiene practices standard PA 6.6 ( Poliamid 6.6 ) % 30 GF we are manufactured.

Mekaniksel Özellikler	Polamid 66	Plastik Türü	Poliamid 66
Sembol	PA 66	Elektriksel Özellikler	
Yoğunluk (g/cm <sup>3</sup> )	1.13 - 1.15	Sembolu	PA 66
Kopma Mukavemeti (Mpa)	66-86	Spesifik Direnç (ohm.cm)	10 <sup>12</sup> - 10 <sup>13</sup>
Kopma Uzaması (%)	30-300	Yüzey Direnci (ohm)	10 <sup>12</sup> - 10 <sup>13</sup>
Eğilme Mukavemeti (Mpa)	80-105	Dielektrik Sabiti (10 <sup>6</sup> Hz)	03.04.2005
Basma Mukavemeti (Mpa)	70-100	Dielektrik Kayıp Faktörü (10 <sup>6</sup> Hz)	0.03 - 0.2
Darbe Mukavemeti (çentikli) (j/cm)	0.43-1.14	Dielektrik Direnci (KV / mm)	20-150
Elastik Modül (çekmede) (Mpa)	1000-2800	Termal Özellikler	
Elastik Modül (eğilmede) (Mpa)	2000-3400	Kristal Erime veya Amorf Yumuşama Noktası (°C)	255-265
Elastik Modül (basmada) (Mpa)	-	Yük Altında Deformasyon Sıcaklığı (°C)	75-105
Sertlik		Maksimum Çalışma Sıcaklığı (°C) Uzun-kısa süre	90-180
Rockwell R	108-120	Spesifik Isı (cal/gr °C)	0.40-0.41
Rockwell M	83-89	Isıl Genleşme Katsayısı (x10 <sup>6</sup> cm/cm °C)	70-100
Shore D	-	Isıl İletkenlik Katsayısı (x10 <sup>6</sup> cal / sn. cm. °C)	4.8 - 5.8
Sürtünme Katsayısı	0.15-0.42	Yanıcılık	V2
Havadan Aldığı Nem (%)	2.4-3.0	Yanma Hızı	Kendi Kendine Söner

## İNO-BR-TEK



Flip Flap Bottom Bumper Door : Produced in different sizes according to customer . It Consists of 3 models . Aluminium , Pvc & chrome .

## İNO-BR-PVC-TP



Flip Flap Door Frame Hole cover : we use to close the mounting holes on the moldings . ISO 9001: 2008- GHP good hygiene practices standard PA 6.6 ( Poliamid 6.6 ) % 30 GF we are manufactured



inovarefrigeration



iNOVA YAPI LTD STi.

Mehmet Akif Cad.No:41 Kısıkköy-Menderes-İzmir / Turkey



Phone : 00 90 232 257 56 70  
Fax : 00 90 232 257 52 60  
Mobile : 00 90 530 948 42 35



www.inovayapi.com  
info@inovayapi.com

inovarefrigeration  
by INOVA YAPI