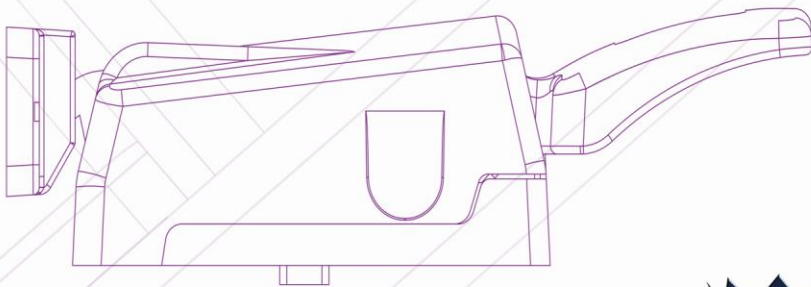
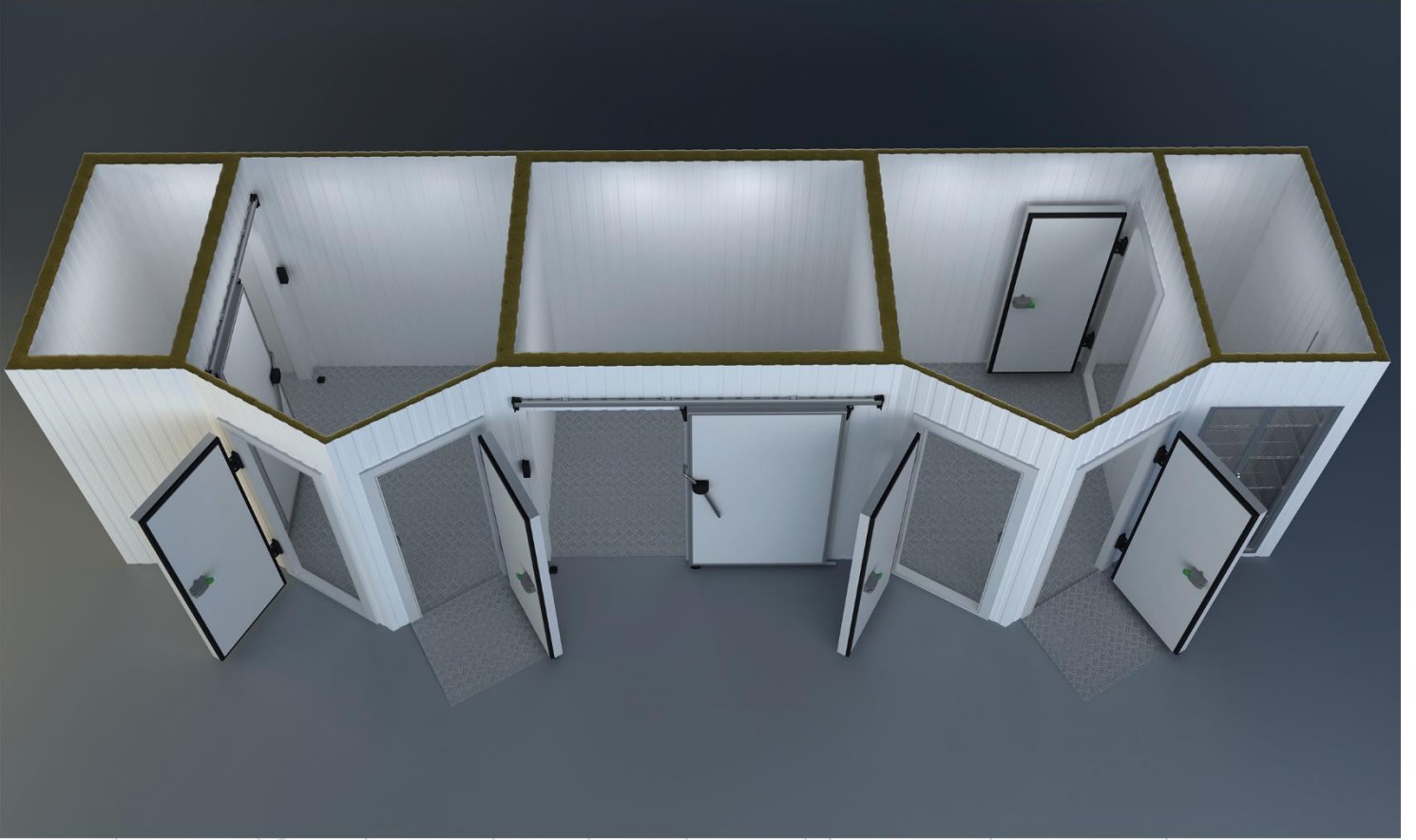


COLD ROOM SLIDING DOOR ACCESSORIES



INOVA REFRIGERATION DOOR AND ACCESSORIES



Inova Group :

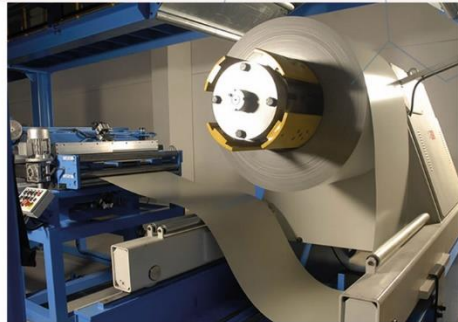
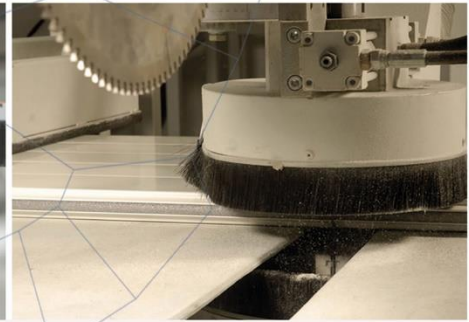
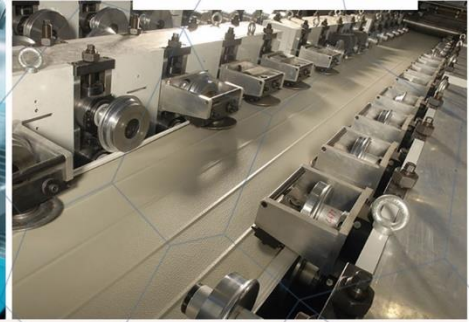
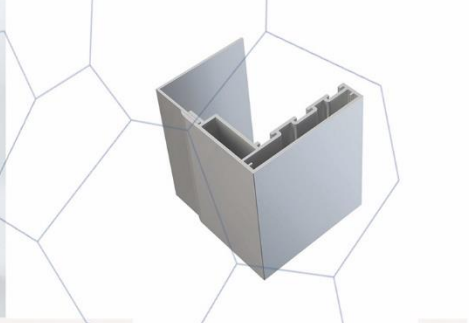
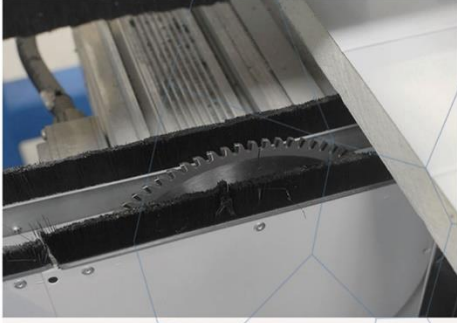
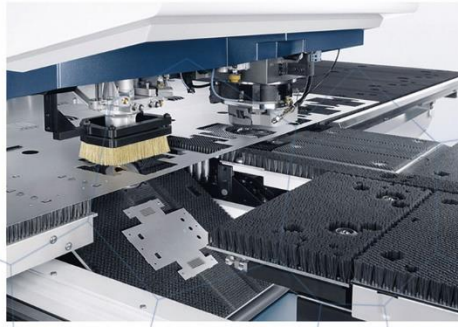
Since its inception, it has Reached More Than 10,000 Customers Worldwide & We Manufactured Than More 80,000 Doors.

Our Production of Turkey :

Sliding Door With Personal Door , Folding Service Door , Double Wings of Sliding Door & With These Doors We Manufactured Hinged Door , Sliding Door ,FlipFlap Door ,Service Door & Monorail System INOVA GROUP Aims to Keep Customer Satisfaction at Maximum Level With its Quality & Service Import – Export – Production – Marketing - Sales & After - Sales Services Constitute Our Main Activity Structure .

IF YOU GIVE IMPORTANCE TO CUSTOMER YOU WILL BE THE MOST VALUABLE BRAND OF WORLD..

Inova Group Continues to Action With This Mission.





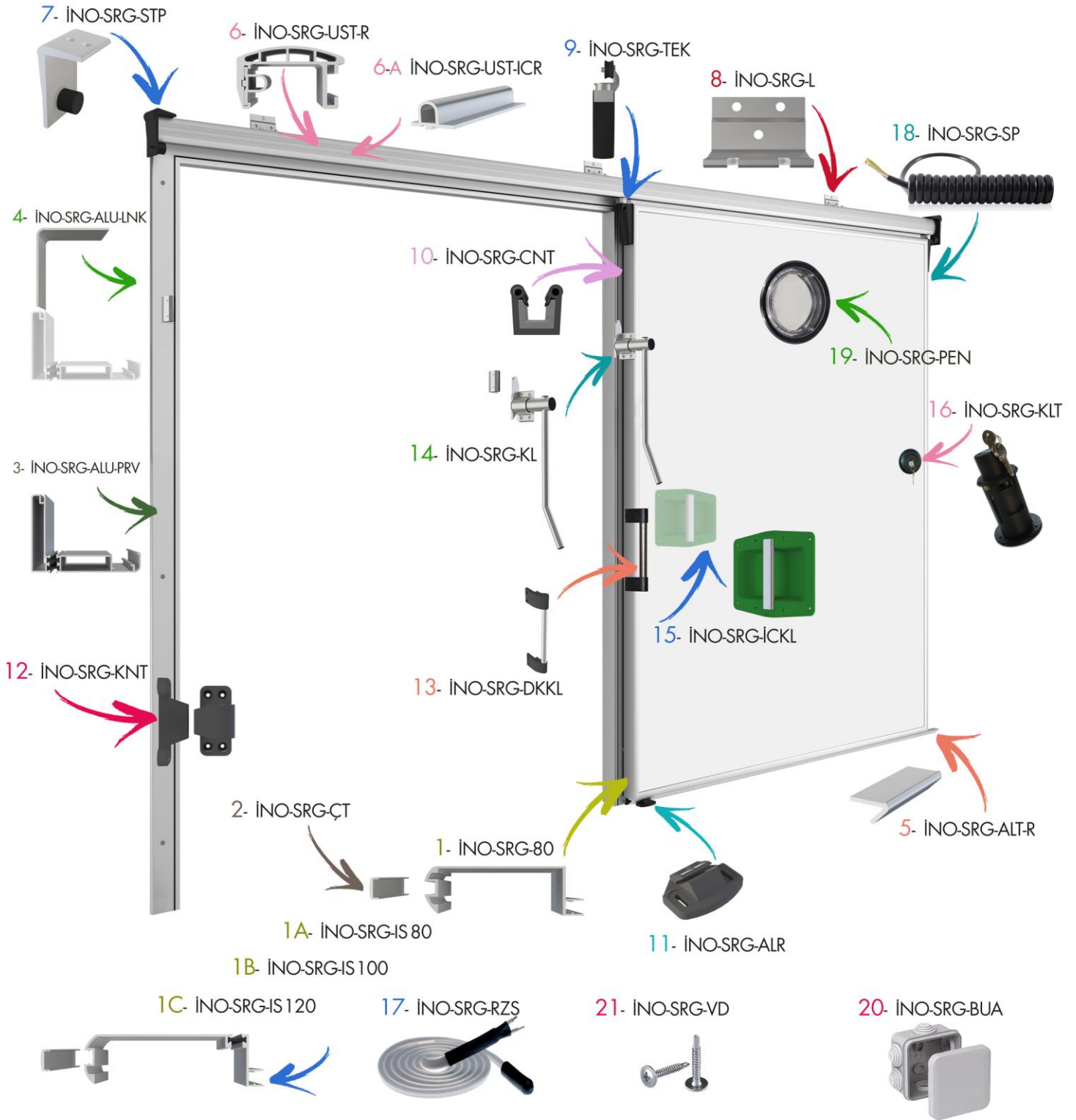
COLD ROOM DOOR ACCESSORIES

Sliding Door



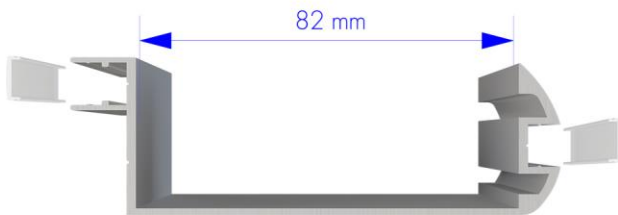
inovarefrigeration
by INOVA YAPI

SLIDING DOOR ACCESSORIES



SLIDING DOOR ACCESSORIES

INO-SRG-80

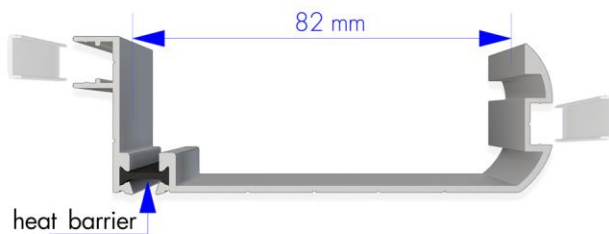


Around The Wings of Sliding Door DIN 50049-2.2. / EN 10204-3.1.B. Standard Anodized Aluminum Profile We Use . (it's for 80 mm door thickness)

CHEMICAL COMPOSITION								
Fe (Iron)	Si (Silisium)	Cu (Copper)	Mn (Manganese)	Mg (Magnesium)	Zn (Zinc)	Ti (Titanium)	Cr (Chrome)	AL (Aluminium)
0,10-0,30	0,30-0,60	0,1	0,1	0,35-0,60	0,15	0,1	0,05	Remaining
0,17	0,42	0,01	0,03	0,47	0,01	0,01	0,01	98,8

MECHANICAL PROPERTIES			
Rupture Strength Rm (N/mm ²) min.215	Yield Strength Rp 0,2 (N/mm ²)min.170	Elongation A 50 mm (%)min.6	Brinel HB min.70
216	171	7	70

INO-SRG-IS-80

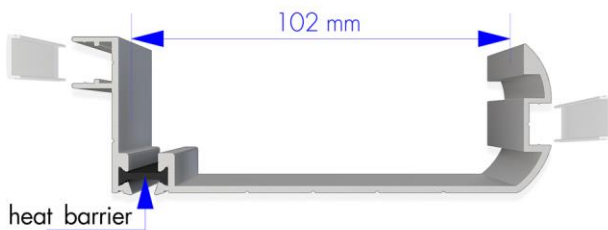


Around The Wings of Sliding Door DIN 50049-2.2./ EN 10204-3.1.B. Standard Anodized Aluminum Profile We Use . (it's for 80 mm door thickness) & With Poliamid Heat Bridge we Protect Insulation in Maximum Level .

CHEMICAL COMPOSITION								
Fe (Iron)	Si (Silisium)	Cu (Copper)	Mn (Manganese)	Mg (Magnesium)	Zn (Zinc)	Ti (Titanium)	Cr (Chrome)	AL (Aluminium)
0,10-0,30	0,30-0,60	0,1	0,1	0,35-0,60	0,15	0,1	0,05	Remaining
0,17	0,42	0,01	0,03	0,47	0,01	0,01	0,01	98,8

MECHANICAL PROPERTIES			
Rupture Strength Rm (N/mm ²) min.215	Yield Strength Rp 0,2 (N/mm ²)min.170	Elongation A 50 mm (%)min.6	Brinel HB min.70
216	171	7	70

INO-SRG-IS-100



Around The Wings of Sliding Door DIN 50049-2.2./ EN 10204-3.1.B. Standard Anodized Aluminum Profile We Use . (it's for 100 mm door thickness) & With Poliamid Heat Bridge we Protect Insulation in Maximum Level .

CHEMICAL COMPOSITION								
Fe (Iron)	Si (Silisium)	Cu (Copper)	Mn (Manganese)	Mg (Magnesium)	Zn (Zinc)	Ti (Titanium)	Cr (Chrome)	AL (Aluminium)
0,10-0,30	0,30-0,60	0,1	0,1	0,35-0,60	0,15	0,1	0,05	Remaining
0,17	0,42	0,01	0,03	0,47	0,01	0,01	0,01	98,8

MECHANICAL PROPERTIES			
Rupture Strength Rm (N/mm ²) min.215	Yield Strength Rp 0,2 (N/mm ²)min.170	Elongation A 50 mm (%)min.6	Brinel HB min.70
216	171	7	70

INO-SRG-IS-120



Around The Wings of Sliding Door DIN 50049-2.2./ EN 10204-3.1.B. Standard Anodized Aluminum Profile We Use . (it's for 120 mm door thickness) & With Poliamid Heat Bridge we Protect Insulation in Maximum Level .

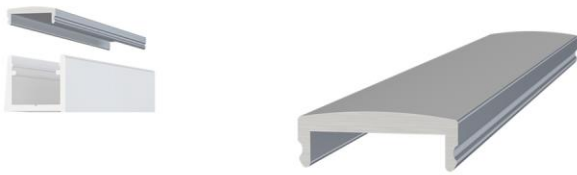
CHEMICAL COMPOSITION								
Fe (Iron)	Si (Silisium)	Cu (Copper)	Mn (Manganese)	Mg (Magnesium)	Zn (Zinc)	Ti (Titanium)	Cr (Chrome)	AL (Aluminium)
0,10-0,30	0,30-0,60	0,1	0,1	0,35-0,60	0,15	0,1	0,05	Remaining
0,17	0,42	0,01	0,03	0,47	0,01	0,01	0,01	98,8

MECHANICAL PROPERTIES			
Rupture Strength Rm (N/mm ²) min.215	Yield Strength Rp 0,2 (N/mm ²)min.170	Elongation A 50 mm (%)min.6	Brinel HB min.70
216	171	7	70



SLIDING DOOR ACCESSORIES

INO-SRG-ÇT



Around The Sliding Door Wings internally & externally DIN 50049-2.2./EN 10204-3.1.B. Standard Anodized Aluminum Profile We Use .

CHEMICAL COMPOSITION								
Fe (Iron)	Si (Silisium)	Cu (Copper)	Mn (Manganese)	Mg (Magnesium)	Zn (Zinc)	Ti (Titanium)	Cr (Chrome)	AL (Aluminum)
0,10-0,30	0,30-0,60	0,1	0,1	0,35-0,60	0,15	0,1	0,05	Remaining
0,17	0,42	0,01	0,03	0,47	0,01	0,01	0,01	98,8

MECHANICAL PROPERTIES			
Rupture Strength Rm (N/mm ²) min.215	Yield Strength Rp 0,2 (N/mm ²)min.170	Elongation A 50 mm (%)min.6	Brinel HB min.70
216	171	7	70

INO-SRG-ALU-PRV



Sliding door front frame . this frame is front Wall frame which fixed With Poliamid Heat Bridge we Protect Insulation in Maximum Level

CHEMICAL COMPOSITION								
Fe (Iron)	Si (Silisium)	Cu (Copper)	Mn (Manganese)	Mg (Magnesium)	Zn (Zinc)	Ti (Titanium)	Cr (Chrome)	AL (Aluminum)
0,10-0,30	0,30-0,60	0,1	0,1	0,35-0,60	0,15	0,1	0,05	Remaining
0,17	0,42	0,01	0,03	0,47	0,01	0,01	0,01	98,8

MECHANICAL PROPERTIES			
Rupture Strength Rm (N/mm ²) min.215	Yield Strength Rp 0,2 (N/mm ²)min.170	Elongation A 50 mm (%)min.6	Brinel HB min.70
216	171	7	70

INO-SRG-ALU-LK

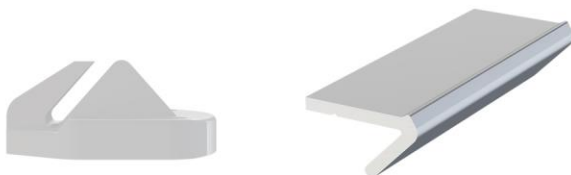


Sliding door Rear frame . this frame is Rear Wall frame which fixed With Front Wall Frame.

CHEMICAL COMPOSITION								
Fe (Iron)	Si (Silisium)	Cu (Copper)	Mn (Manganese)	Mg (Magnesium)	Zn (Zinc)	Ti (Titanium)	Cr (Chrome)	AL (Aluminum)
0,10-0,30	0,30-0,60	0,1	0,1	0,35-0,60	0,15	0,1	0,05	Remaining
0,17	0,42	0,01	0,03	0,47	0,01	0,01	0,01	98,8

MECHANICAL PROPERTIES			
Rupture Strength Rm (N/mm ²) min.215	Yield Strength Rp 0,2 (N/mm ²)min.170	Elongation A 50 mm (%)min.6	Brinel HB min.70
216	171	7	70

INO-SRG-ALT-R



Door Bottom Rail we use under the door ensures that the door does not exit the channel and is active.

CHEMICAL COMPOSITION								
Fe (Iron)	Si (Silisium)	Cu (Copper)	Mn (Manganese)	Mg (Magnesium)	Zn (Zinc)	Ti (Titanium)	Cr (Chrome)	AL (Aluminum)
0,10-0,30	0,30-0,60	0,1	0,1	0,35-0,60	0,15	0,1	0,05	Remaining
0,17	0,42	0,01	0,03	0,47	0,01	0,01	0,01	98,8

MECHANICAL PROPERTIES			
Rupture Strength Rm (N/mm ²) min.215	Yield Strength Rp 0,2 (N/mm ²)min.170	Elongation A 50 mm (%)min.6	Brinel HB min.70
216	171	7	70



SLIDING DOOR ACCESSORIES

INO-SRG-UST-R

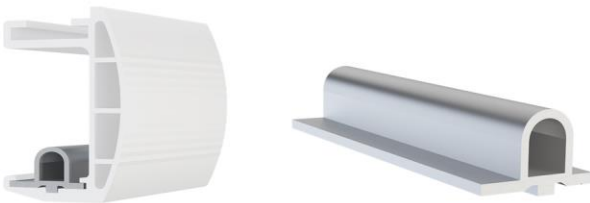


Door Top Rail (slider) System is Aluminum top rail for easy opening and closing of doors System is available . This System are production on DIN 50049-2.2./EN 10204-3.1.B standards of anodized aluminum profiles .

CHEMICAL COMPOSITION								
Fe (Iron)	Si (Silisium)	Cu (Copper)	Mn (Manganese)	Mg (Magnesium)	Zn (Zinc)	Ti (Titanium)	Cr (Chrome)	AL (Aluminum)
0,10-0,30	0,30-0,60	0,1	0,1	0,35-0,60	0,15	0,1	0,05	Remaining
0,17	0,42	0,01	0,03	0,47	0,01	0,01	0,01	98,8

MECHANICAL PROPERTIES			
Rupture Strength Rm (N/mm ²) min.215	Yield Strength Rp 0,2 (N/mm ²)min.170	Elongation A 50 mm (%)min.6	Brinel HB min.70
216	171	7	70

INO-SRG-UST-ICR



Top rail channel inner profile we use this system for active movement of the wheel mechanism in the upper rail.

CHEMICAL COMPOSITION								
Fe (Iron)	Si (Silisium)	Cu (Copper)	Mn (Manganese)	Mg (Magnesium)	Zn (Zinc)	Ti (Titanium)	Cr (Chrome)	AL (Aluminum)
0,10-0,30	0,30-0,60	0,1	0,1	0,35-0,60	0,15	0,1	0,05	Remaining
0,17	0,42	0,01	0,03	0,47	0,01	0,01	0,01	98,8

MECHANICAL PROPERTIES			
Rupture Strength Rm (N/mm ²) min.215	Yield Strength Rp 0,2 (N/mm ²)min.170	Elongation A 50 mm (%)min.6	Brinel HB min.70
216	171	7	70

INO-SRG-STP



Door top ray stops are fix at the top rail heads and we use this system to stop door during closin.

CHEMICAL COMPOSITION								
Fe (Iron)	Si (Silisium)	Cu (Copper)	Mn (Manganese)	Mg (Magnesium)	Zn (Zinc)	Ti (Titanium)	Cr (Chrome)	AL (Aluminum)
0,10-0,30	0,30-0,60	0,1	0,1	0,35-0,60	0,15	0,1	0,05	Remaining
0,17	0,42	0,01	0,03	0,47	0,01	0,01	0,01	98,8

MECHANICAL PROPERTIES			
Rupture Strength Rm (N/mm ²) min.215	Yield Strength Rp 0,2 (N/mm ²)min.170	Elongation A 50 mm (%)min.6	Brinel HB min.70
216	171	7	70

INO-SRG-TEK



Sliding door top rail wheels are Mount on the door .This system make connects together between door and top rail for active operation of the door in the rail

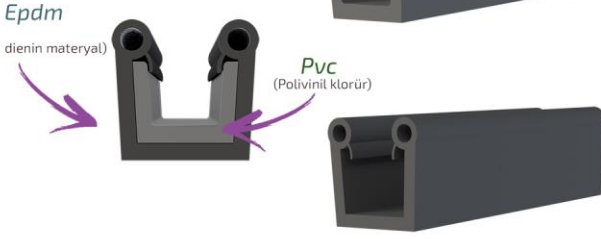
CHEMICAL COMPOSITION								
Fe (Iron)	Si (Silisium)	Cu (Copper)	Mn (Manganese)	Mg (Magnesium)	Zn (Zinc)	Ti (Titanium)	Cr (Chrome)	AL (Aluminum)
0,10-0,30	0,30-0,60	0,1	0,1	0,35-0,60	0,15	0,1	0,05	Remaining
0,17	0,42	0,01	0,03	0,47	0,01	0,01	0,01	98,8

MECHANICAL PROPERTIES			
Rupture Strength Rm (N/mm ²) min.215	Yield Strength Rp 0,2 (N/mm ²)min.170	Elongation A 50 mm (%)min.6	Brinel HB min.70
216	171	7	70



SLIDING DOOR ACCESSORIES

INO-SRG-CNT



Door Insulation Gaskets gaskets take place of double-sided on all sides for the sliding door , Used for insulation of the door , We production of Double Density Component with Epdm & Pvc Combination , it's in compliance with 21.CFR 177.2600 specifications & quality standards , internal direction transmitter poliamidden production , ISO 9001 : 2008- GHP good hygiene practices standard PA 6.6 (Poliamid 6.6) % 30 GF we are manufactured

INO-SRG-UST-ALR



Sliding door bottom rail channel . mounted under the door, allows doors to move within the rail ,ISO 9001 : 2008- GHP good hygiene practices standard PA 6.6 (Poliamid 6.6) % 30 GF we are manufactured .

INO-SRG-KNT



Sliding Door Front interlock Consists of 2 pieces ,1.piece is attached to the door leaf 2. piece is attached to the frame allows door to lock during closing ,ISO 9001 : 2008- GHP good hygiene practices standard PA 6.6 (Poliamid 6.6) % 30 GF we are manufactured .

INO-SRG-DKKL



Sliding door Perpendicular outer opening handle used for opening & closing the door.polyamide holder & stainless steel pipe is produced from profile , stainless pipe X5CrNi18-10- EN 1.4301-403 standard quality. ISO 9001 : 2008- GHP good hygiene practices standard PA 6.6 (Poliamid 6.6) % 30 GF we are manufactured .



inovarefrigeration
by INOVA YAPI

SLIDING DOOR ACCESSORIES

INO-SRG-KL



Sliding door Side outer opening handle used for opening & closing the door. Aluminium & stainless steel pipe is produced from profile , Aluminium DIN 50049.2.2. / EN 10204-3.1.B Standard anodized coated aluminum . stainless pipe X5CrNi18-10-EN 1.4301-403 standard quality.

INO-SRG-ICKL



Sliding door inner opening handle used for opening & closing the door. Made of Aluminium & poliamid, poliamid ISO 9001: 2008- GHP good hygiene practices standard PA 6.6 (Poliamid 6.6) % 30 GF we are manufactured . Aluminium DIN 50049.2.2. / EN 10204-3.1.B Standard anodized coated aluminum .

INO-SRG-KLT



Sliding door lock Mounted on the door wing , Door Locked From The Outside & this lock has a system that can be opened from the inside steel barrel is applied to the body,ISO 9001: 2008- GHP good hygiene practices standard PA 6.6(Poliamid 6.6) % 30 GF we are manufactured Aluminium DIN 50049.2.2. / EN 10204-3.1.B Standard anodized coated aluminum .

INO-SRG-RZS



Sliding door Heater applied to the channel in the door wing Unit can be cut silicone as 30 / w-50 / w according to requirement , Direct connection to 220v mains.

INO-SRG-SP

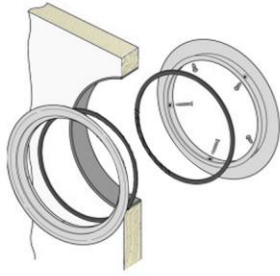


Sliding door Heater Connection Spral Cable used for connecting the heater in the door wing



SLIDING DOOR ACCESSORIES

INO-SRG-PEN



Sliding door Viewing Window It is a system for seeing inside & outside . made of fiberglass which production on hard & transparent material & Epdm flexible seals 100% leak proof.

INO-SRG-BUA



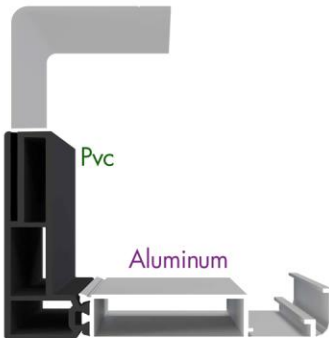
Sliding Door Heater Connection Box used to connect the heater on the door.

INO-SRG-VD



Sliding Door Collecting Screw , use when Mounting the door.

INO-SRG-ALU&PVC-PRV



Sliding door front frame . this frame is front Wall frame which fixed With Poliamid Heat Bridge we Protect Insulation in Maximum Level.Aluminum and Pvc Combined.

CHEMICAL COMPOSITION									
Fe (Iron)	Si (Silisum)	Cu (Copper)	Mn (Manganese)	Mg (Magnesium)	Zn (Zinc)	Ti (Titanium)	Cr (Chrome)	AL (Aluminum)	
0,10-0,30	0,30-0,60	0,1	0,1	0,35-0,60	0,15	0,1	0,05	Remaining	
0,17	0,42	0,01	0,03	0,47	0,01	0,01	0,01	98,8	

MECHANICAL PROPERTIES			
Rupture Strength Rm (N/mm ²) min.215	Yield Strength Rp 0,2 (N/mm ²)min.170	Elongation A 50 mm (%)min.6	Brinel HB min.70
216	171	7	70



inovarefrigeration



iNOVA YAPI LTD STi.

Mehmet Akif Cad.No:41 Kısıkköy-Menderes-İzmir / Turkey



Phone : 00 90 232 257 56 70
Fax : 00 90 232 257 52 60
Mobile : 00 90 530 948 42 35



www.inovayapi.com
info@inovayapi.com

inovarefrigeration
by INOVA YAPI