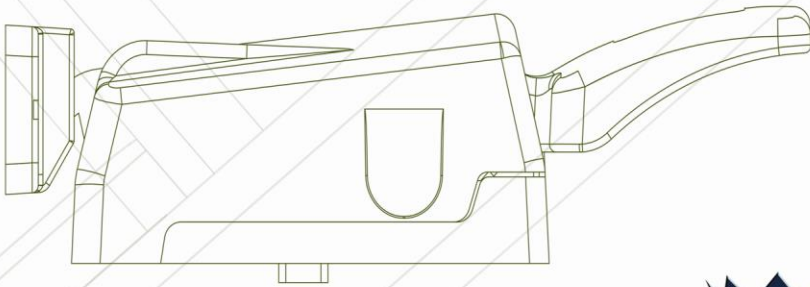
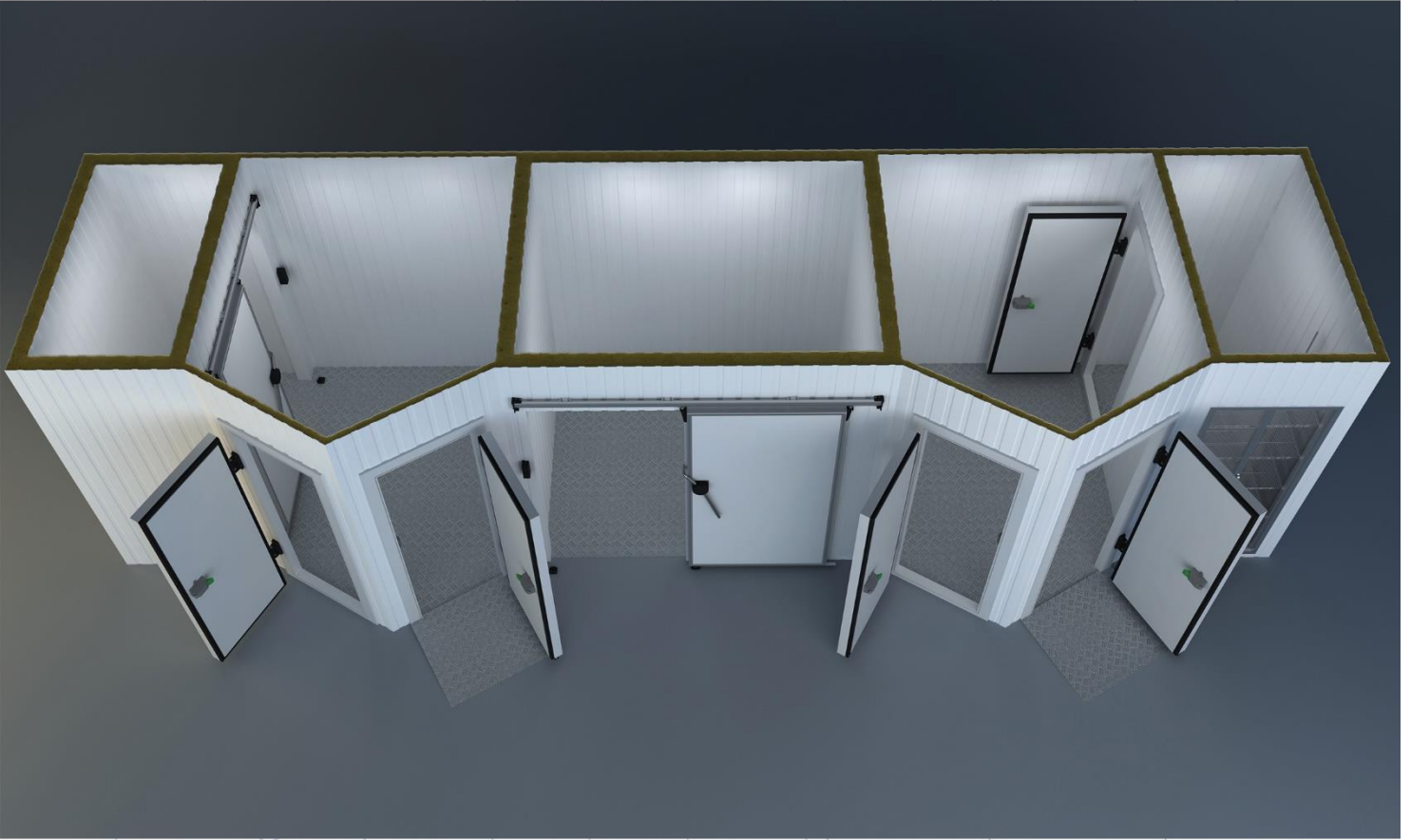


COLD ROOM HINGED DOOR ACCESSORIES.(Pvc Frame)



INOVA REFRIGERATION DOOR AND ACCESSORIES



Inova Group :

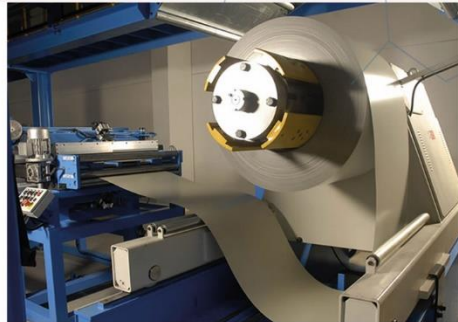
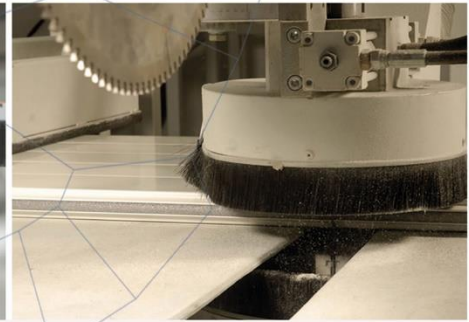
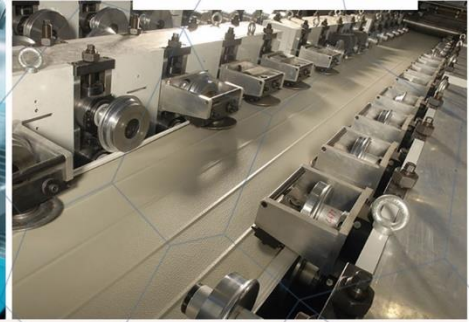
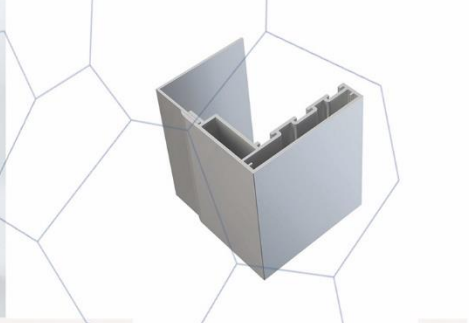
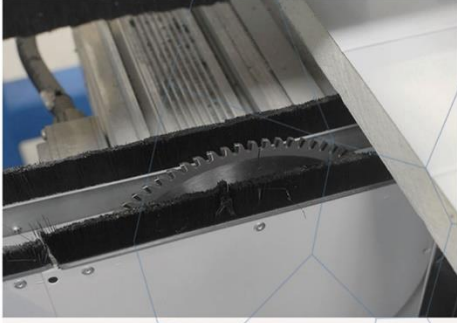
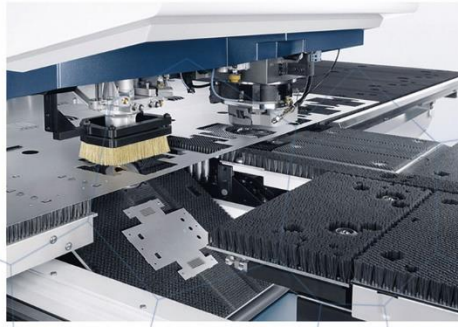
Since its inception, it has Reached More Than 10,000 Customers Worldwide & We Manufactured Than More 80,000 Doors.

Our Production of Turkey :

Sliding Door With Personal Door , Folding Service Door , Double Wings of Sliding Door & With These Doors We Manufactured Hinged Door , Sliding Door ,FlipFlap Door ,Service Door & Monorail System INOVA GROUP Aims to Keep Customer Satisfaction at Maximum Level With its Quality & Service Import – Export – Production – Marketing - Sales & After - Sales Services Constitute Our Main Activity Structure .

IF YOU GIVE IMPORTANCE TO CUSTOMER YOU WILL BE THE MOST VALUABLE BRAND OF WORLD..

Inova Group Continues to Action With This Mission.





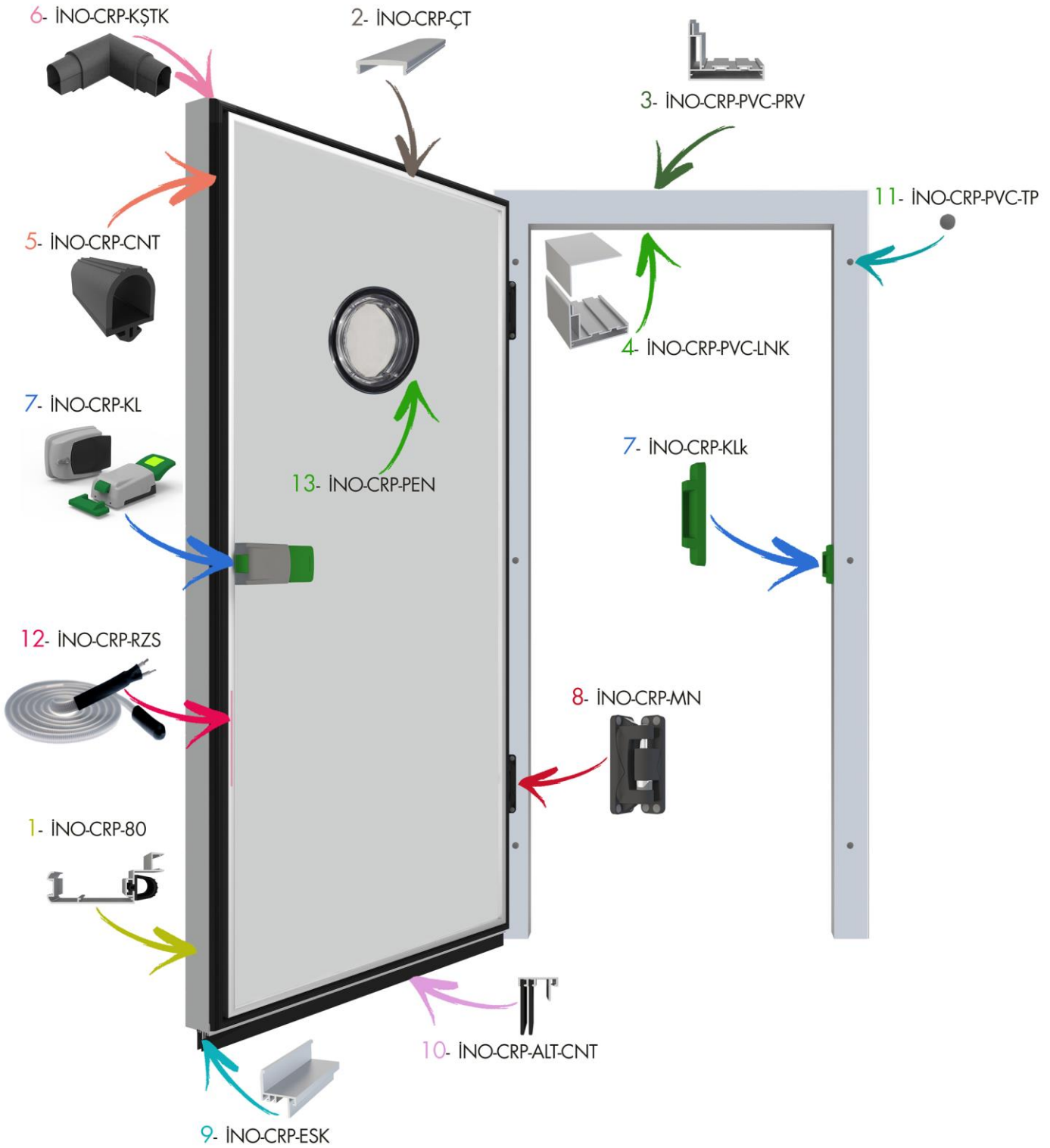
COLD ROOM DOOR ACCESSORIES

Hinged Doors

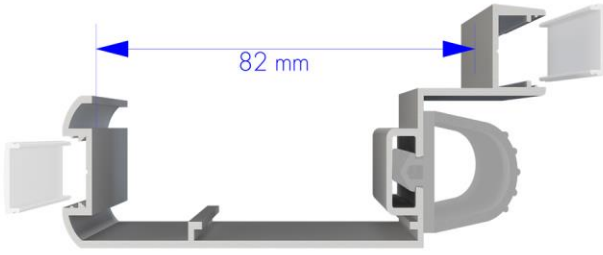


inovarefrigeration
by INOVA YAPI

PVC FRAME



İNO-CRP-80



Hinged Door Case Around The Wings of Door DIN 50049-2.2./EN 10204-3.1.B. Standard Anodized Aluminum Profile We Use . (it's for 80 mm door thickness)

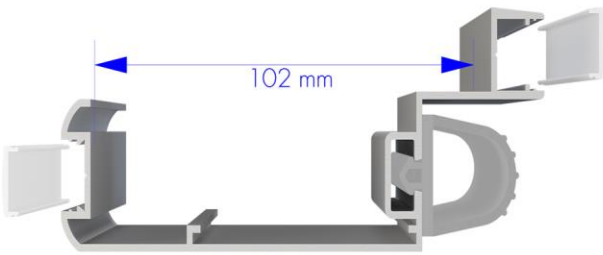
CHEMICAL COMPOSITION

Fe (Iron)	Si (Silisum)	Cu (Copper)	Mn (Manganese)	Mg (Magnesium)	Zn (Zinc)	Ti (Titanium)	Cr (Chrome)	AL (Aluminum)
0,10-0,30	0,30-0,60	0,1	0,1	0,35-0,60	0,15	0,1	0,05	Remaining
0,17	0,42	0,01	0,03	0,47	0,01	0,01	0,01	98,8

MECHANICAL PROPERTIES

Rupture Strength Rm (N/mm ²) min.215	Yield Strength Rp 0,2 (N/mm ²)min.170	Elongation A 50 mm (%)min.6	Brinel HB min.70
216	171	7	70

İNO-CRP-100



Hinged Door Case Around The Wings of Door DIN 50049-2.2./EN 10204-3.1.B. Standard Anodized Aluminum Profile We Use . (it's for 100 mm door thickness) & With Poliamid Heat Bridge we Protect Insulation in Maximum Level .

CHEMICAL COMPOSITION

Fe (Iron)	Si (Silisum)	Cu (Copper)	Mn (Manganese)	Mg (Magnesium)	Zn (Zinc)	Ti (Titanium)	Cr (Chrome)	AL (Aluminum)
0,10-0,30	0,30-0,60	0,1	0,1	0,35-0,60	0,15	0,1	0,05	Remaining
0,17	0,42	0,01	0,03	0,47	0,01	0,01	0,01	98,8

MECHANICAL PROPERTIES

Rupture Strength Rm (N/mm ²) min.215	Yield Strength Rp 0,2 (N/mm ²)min.170	Elongation A 50 mm (%)min.6	Brinel HB min.70
216	171	7	70

İNO-CRP-ÇT



Around The Hinged Door Wings internally & externally DIN 50049-2.2./EN 10204-3.1.B. Standard Anodized Aluminum Profile We Use .

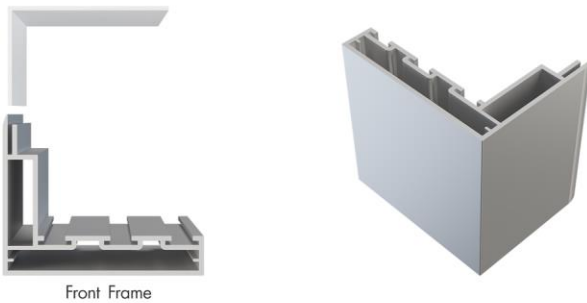
CHEMICAL COMPOSITION

Fe (Iron)	Si (Silisum)	Cu (Copper)	Mn (Manganese)	Mg (Magnesium)	Zn (Zinc)	Ti (Titanium)	Cr (Chrome)	AL (Aluminum)
0,10-0,30	0,30-0,60	0,1	0,1	0,35-0,60	0,15	0,1	0,05	Remaining
0,17	0,42	0,01	0,03	0,47	0,01	0,01	0,01	98,8

MECHANICAL PROPERTIES

Rupture Strength Rm (N/mm ²) min.215	Yield Strength Rp 0,2 (N/mm ²)min.170	Elongation A 50 mm (%)min.6	Brinel HB min.70
216	171	7	70

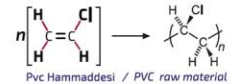
İNO-CRP-PVC-PRV



Hinged door front frame . this frame is attached between the Wing & the unit to be installed.ISO 9001 : 2008- GHP good hygiene practices standard PVC Frame

PVC KAPI PERVAZI TEKNİK OLUŞUM

PVC -Polivinil Klorür Orijinal	% 75-80
Stabilizatör	% 1-5
Titandioksit	% 2-5
Mukavemet Artrıcı)Impact Modifier)	% 6-14
Calisit	% 2-6

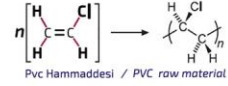


İNO-CRP-PVC-LNK

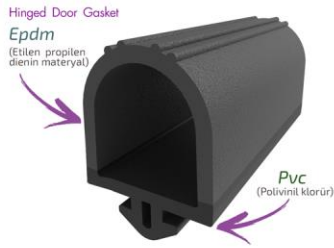


Hinged door Rear Frame . This Frame is attaches Behind to the front door Frame ISO 9001 : 2008- GHP good hygiene practices standard PVC Frame

PVC KAPI PERVAZI TEKNİK OLUŞUM	
PVC-Polivinil Klorür Orijinal	% 75-80
Stabilizatör	% 1-5
Titandiyoksit	% 2-5
Mukavemet Artırıcı (Impact Modifier)	% 6-14
CaSıt	% 2-6

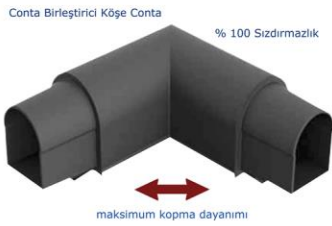


İNO-CRP-CNT



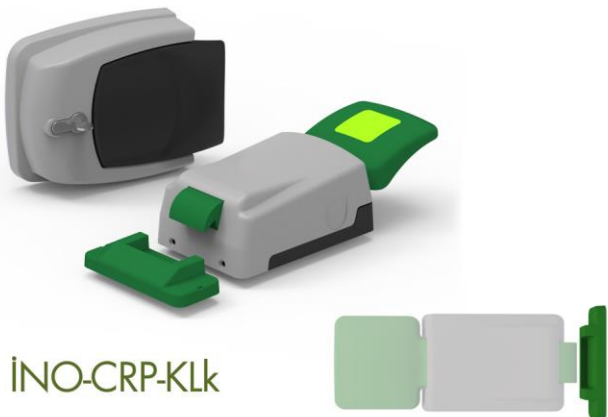
Hinged Door Insulation Gaskets are used for insulation around the door wing . We Made of Epdm & PVC rubber . it's in compliance with 21.CFR 177.2600 specifications & quality standards

İNO-CRP-KŞTK



Hinged door Wing Corner Gasket it's used for corners of gaskets rotating for insulation around the wing.We Made of Epdm & PVC rubber . it's in compliance with 21.CFR 177.2600 specifications & quality standards

İNO-CRP-KL



Hinged door Handle is applied on the wing Internal handle , outer handle and lock ISO 9001: 2008- GHP good hygiene practices standard PA 6.6 (Poliamid 6.6) % 30 GF we are manufactured

Mekaniksel Özellikler	Polamid 66	Plastik Türü	Polamid 66
Sembol	PA 66	Elektriksel Özellikler	PA 66
Yoğunluk (g/cm ³)	1.13 - 1.15	Sembolü	PA 66
Kopma Mukavemeti (Mpa)	66-86	Spesifik Direnç (ohm.cm)	10 ²² - 10 ¹³
Kopma Uzaması (%)	30-300	Yüzey Direnci (ohm)	10 ²² - 10 ¹³
Eğilme Mukavemeti (Mpa)	80-105	Dielektrik Sabiti (10 ⁶ Hz)	03.04.2005
Basma Mukavemeti (Mpa)	70-100	Dielektrik Kayıp Faktörü (10 ⁶ Hz)	0.03 - 0.2
Darbe Mukavemeti (çentikli) (j/cm)	0.43-1.14	Dielektrik Direnci (KV / mm)	20-150
Elastik Modül (çekmede) (Mpa)	1000-2800	Termal Özellikler	
Elastik Modül (eğilmede) (Mpa)	2000-3400	Kristal Erime veya Amorf Yumuşama Noktası (°C)	255-265
Elastik Modül (basmada) (Mpa)	-	Yük Altında Deformasyon Sıcaklığı (°C)	75-105
Sertlik		Maksimum Çalışma Sıcaklığı (°C) Uzun-kısa süre	90-180
Rockwell R	108-120	Spesifik Isı (cal/gr °C)	0.40-0.41
Rockwell M	83-89	Isıl Genleşme Katsayısı (x10 ⁶ cm/cm °C)	70-100
Shore D	-	Isıl İletkenlik Katsayısı (x10 ⁸ cal / sn. cm. °C)	4.8 - 5.8
Sürtünme Katsayısı	0.15-0.42	Yanıcılık	V2
Havadan Aldığı Nem (%)	2.4-3.0	Yanma Hızı	Kendi Kendine Söner



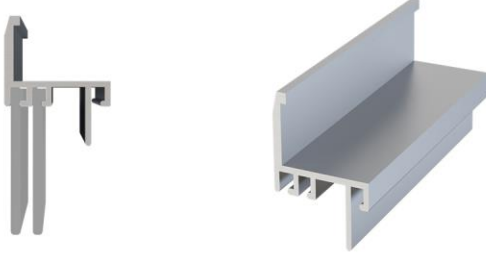
İNO-CRP-MN



Hinged Door Hinges We Use to connect between the door wing with the door Frame ISO 9001 : 2008- GHP good hygiene practices standard PA 6.6 (Poliamid 6.6) % 30 GF we are manufactured

Mekaniksel Özellikler	Polamid 66	Plastik Türü	Polamid 66
Sembol	PA 66	Elektriksel Özellikler	
Yoğunluk (g/cm ³)	1.13 - 1.15	Sembolu	PA 66
Kopma Mukavemeti (Mpa)	66-86	Spesifik Direnc (ohm.cm)	10 ¹² - 10 ¹³
Kopma Uzaması (%)	30-300	Yüzey Direnci (ohm)	10 ¹⁵ - 10 ¹³
Eğilme Mukavemeti (Mpa)	80-105	Dielektrik Sabiti (10 ⁶ Hz)	03.04.2005
Basma Mukavemeti (Mpa)	70-100	Dielektrik Kayıp Faktörü (10 ⁶ Hz)	0.03 - 0.2
Darbe Mukavemeti (çentikli) (J/cm)	0.43-1.14	Dielektrik Direnci (KV / mm)	20-150
Elastik Modül (çekmede) (Mpa)	1000-2800	Termal Özellikler	
Elastik Modül (eğilmede) (Mpa)	2000-3400	Kristal Erime veya Amorf Yumuşama Noktası (°C)	255-265
Elastik Modül (basmada) (Mpa)	-	Yük Altında Deformasyon Sıcaklığı (°C)	75-105
Sertlik		Maksimum Çalışma Sıcaklığı (°C) Uzun-kısa süre	90-180
Rockwell R	108-120	Spesifik Isı (cal/gr °C)	0.40-0.41
Rockwell M	83-89	Isıl Genleşme Katsayısı (x10 ⁶ cm/cm °C)	70-100
Shore D	-	Isıl İletkenlik Katsayısı (x10 ⁶ cal / sn. cm. °C)	4.8 - 5.8
Sürtünme Katsayısı	0.15-0.42	Yanıcılık	V2
Havadan Aldığı Nem (%)	2.4-3.0	Yanma Hızı	Kendi Kendine Söner

İNO-CRP-ESK



Hinged door Wing bottom Threshold Aluminum Profile are attaches to the Wing frame at the bottom of the Door & if you did not use can turns the door without a threshold. Aluminium DIN 50049.2.2. / EN 10204-3.1.B Standard anodized coated aluminum .

KİMYASAL BİLEŞİM									
Fe	Si	Cu	Mn	Mg	Zn	Ti	Cr	AL	
0,10-0,30	0,30-0,60	0,1	0,1	0,35-0,60	0,15	0,1	0,05	KALAN	
0,17	0,42	0,01	0,03	0,47	0,01	0,01	0,01	98,8	

MEKANİK ÖZELLİKLER			
KOPMADAYANIMI Rm (N/mm ²) min.215	AKMADAYANIMI Rp 0,2 (N/mm ²)min.170	UZAMA A 50 mm (%)min.6	Brinel HB min.70
216	171	7	70

İNO-CRP-ALT-CNT



Hinged door Wing bottom Gasket used for insulation on the underside of the door Wing . It is made of Epdm and PVC rubber. it's in compliance with 21.CFR 177.2600 specifications & quality standards

İNO-CRP-PVC-TP



Hinged door Wing bottom Gasket used for insulation on the underside of the door Wing . It is made of Epdm and PVC rubber. it's in compliance with 21.CFR 177.2600 specifications & quality standards



İNO-CRP-RZS



Hinged door Heater applied to the channel in the door wing Unit can be cut silicone as 30 / w-50 / w according to requirement , Direct connection to 220v mains

İletken Kondüktör:	2x0,75 mm ² Nikel-Bakır
Isıtma Teli:	Nikel Krom veya Nikel Bakır
Dış Çap:	5,00 mm x 7,00 mm
Max. Ohm.:	---
Max. Voltaj:	220 - 230 V
Max. Güç:	20 w/m --> 60 w/m
Max. Çalışma Sıcaklığı:	-70°C / +200°C
Tolerans:	Rezistans: ± %10
	Çap: ±0,2 mm
	Boy: ± %1
Sonlandırma İzolasyon:	Shiring Makaron veya Silikon Sonlandırma Parçası
Max. Devre Uzunluğu:	40 - 80 meter



İNO-CRP-PEN



Hinged door Viewing Window It is a system for seeing inside & outside . made of fiberglass which production on hard & transparent material & Epdm flexible seals 100% leak proof



inovarefrigeration



iNOVA YAPI LTD STi.

Mehmet Akif Cad.No:41 Kısıkköy-Menderes-İzmir / Turkey



Phone : 00 90 232 257 56 70
Fax : 00 90 232 257 52 60
Mobile : 00 90 530 948 42 35



www.inovayapi.com
info@inovayapi.com

inovarefrigeration
by INOVA YAPI