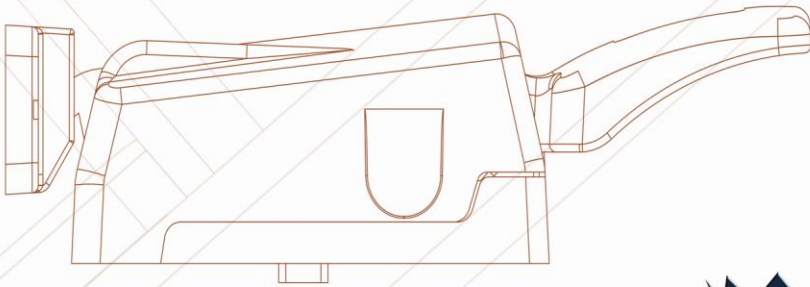
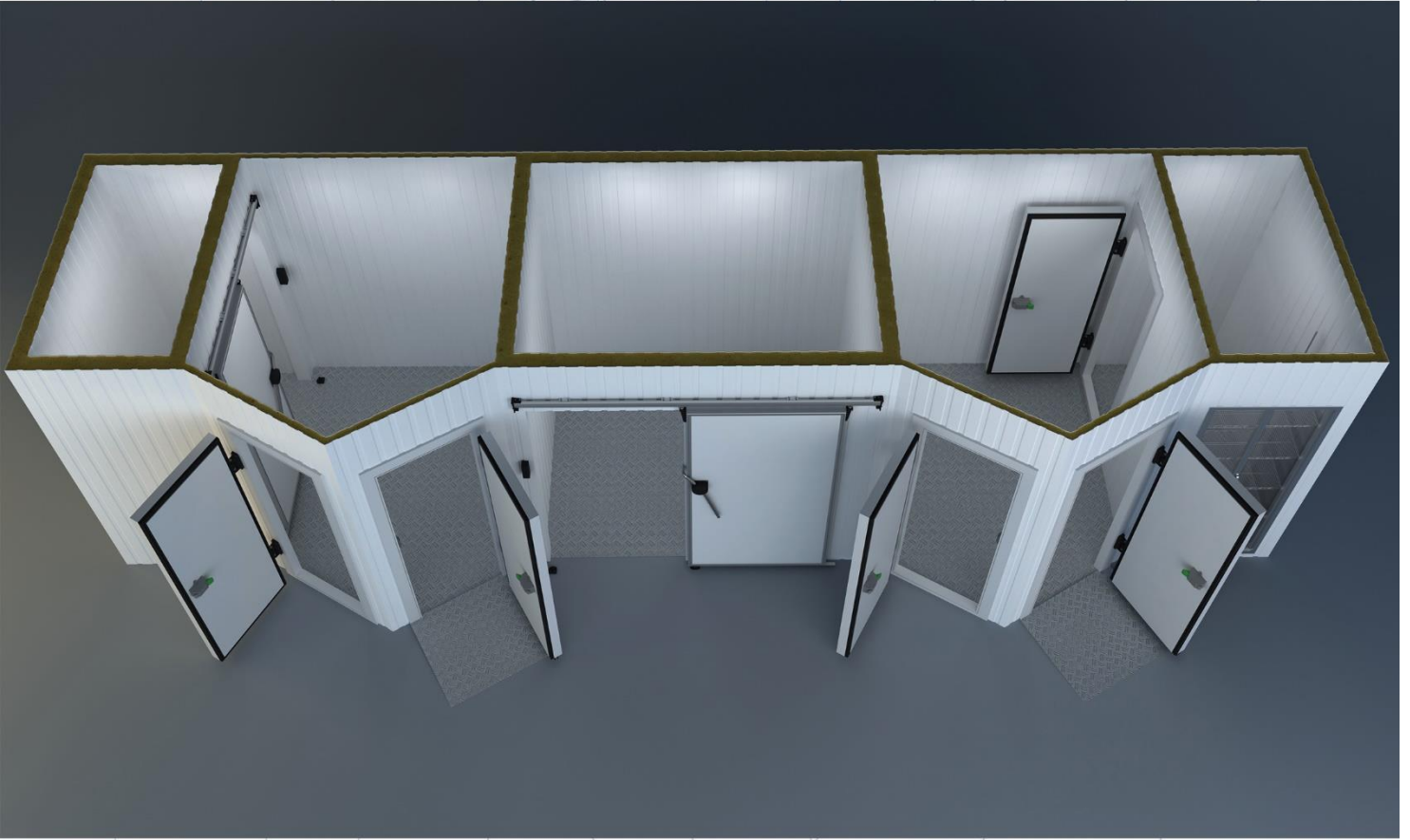


COLD ROOM HINGED DOOR ACCESSORIES.(Aluminum Frame)



INOVA REFRIGERATION DOOR AND ACCESSORIES



Inova Group :

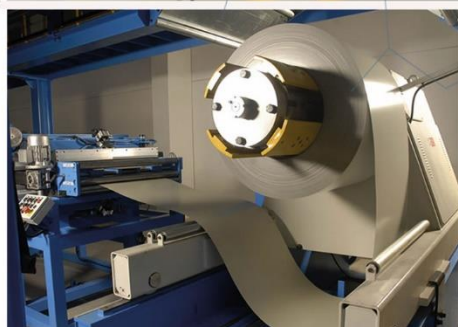
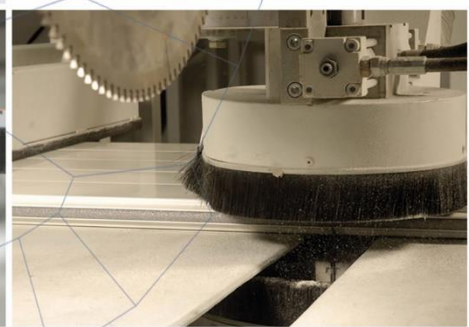
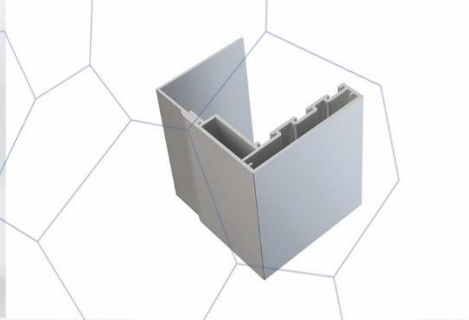
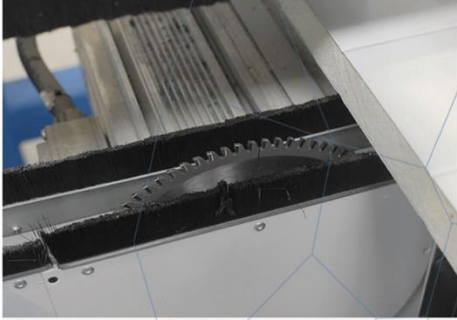
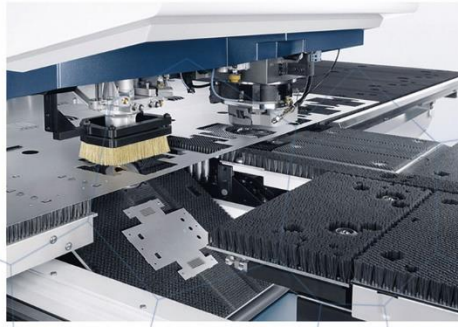
Since its inception, it has Reached More Than 10,000 Customers Worldwide & We Manufactured Than More 80,000 Doors.

Our Production of Turkey :

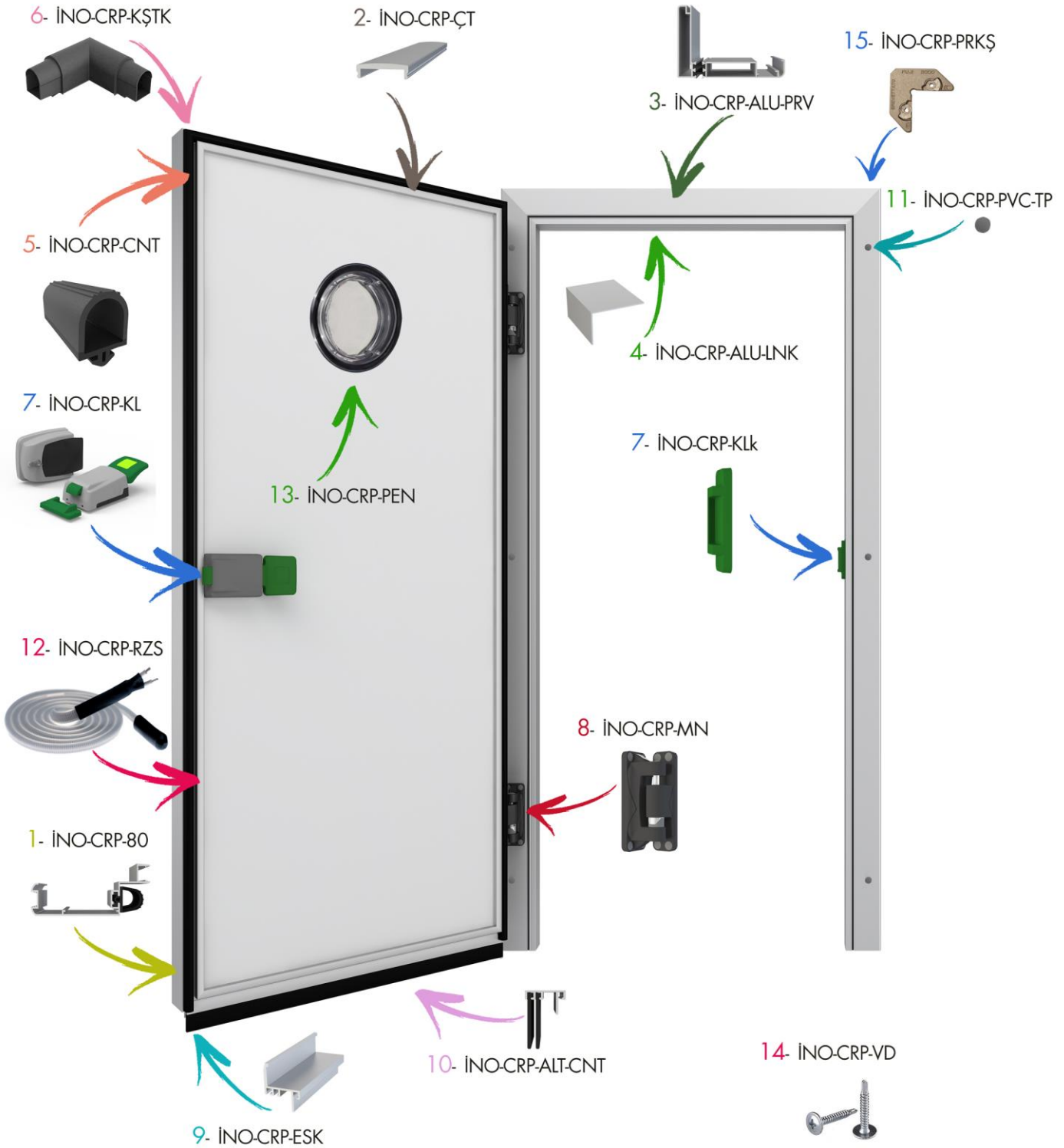
Sliding Door With Personal Door , Folding Service Door , Double Wings of Sliding Door & With These Doors We Manufactured Hinged Door , Sliding Door ,FlipFlap Door ,Service Door & Monorail System INOVA GROUP Aims to Keep Customer Satisfaction at Maximum Level With its Quality & Service Import – Export – Production – Marketing - Sales & After - Sales Services Constitute Our Main Activity Structure .

IF YOU GIVE IMPORTANCE TO CUSTOMER YOU WILL BE THE MOST VALUABLE BRAND OF WORLD..

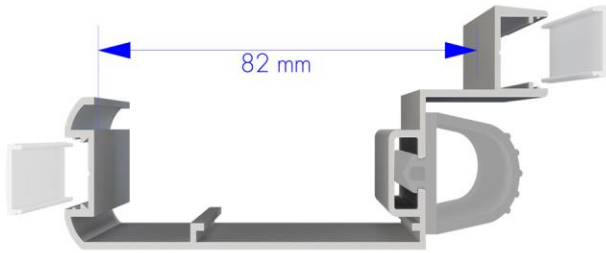
Inova Group Continues to Action With This Mission.



ALUMINUM FRAME



INO-CRP-80

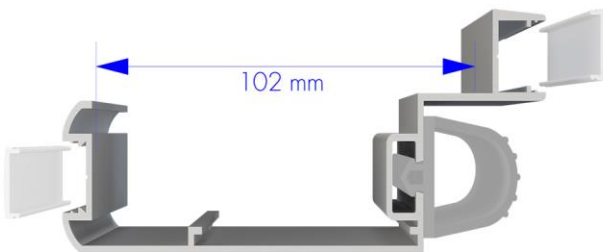


Hinged Door Case Around The Wings of Door DIN 50049-2.2./EN 10204-3.1.B. Standard Anodized Aluminum Profile We Use . (it's for 80 mm door thickness)

CHEMICAL COMPOSITION								
Fe (Iron)	Si (Silisum)	Cu (Copper)	Mn (Manganese)	Mg (Magnesium)	Zn (Zinc)	Ti (Titanium)	Cr (Chrome)	AL (Aluminium)
0,10-0,30	0,30-0,60	0,1	0,1	0,35-0,60	0,15	0,1	0,05	Remaining
0,17	0,42	0,01	0,03	0,47	0,01	0,01	0,01	98,8

MECHANICAL PROPERTIES			
Rupture Strength Rm (N/mm ²) min.215	Yield Strength Rp 0,2 (N/mm ²)min.170	Elongation A 50 mm (%)min.6	Brinel HB min.70
216	171	7	70

INO-CRP-100



Hinged Door Case Around The Wings of Door DIN 50049-2.2./EN 10204-3.1.B. Standard Anodized Aluminum Profile We Use . (it's for 100 mm door thickness) & With Poliamid Heat Bridge we Protect Insulation in Maximum Level .

CHEMICAL COMPOSITION								
Fe (Iron)	Si (Silisum)	Cu (Copper)	Mn (Manganese)	Mg (Magnesium)	Zn (Zinc)	Ti (Titanium)	Cr (Chrome)	AL (Aluminium)
0,10-0,30	0,30-0,60	0,1	0,1	0,35-0,60	0,15	0,1	0,05	Remaining
0,17	0,42	0,01	0,03	0,47	0,01	0,01	0,01	98,8

MECHANICAL PROPERTIES			
Rupture Strength Rm (N/mm ²) min.215	Yield Strength Rp 0,2 (N/mm ²)min.170	Elongation A 50 mm (%)min.6	Brinel HB min.70
216	171	7	70

INO-CRP-ÇT



Around The Hinged Door Wings internally & externally DIN 50049-2.2./EN 10204-3.1.B. Standard Anodized Aluminum Profile We Use .

CHEMICAL COMPOSITION								
Fe (Iron)	Si (Silisum)	Cu (Copper)	Mn (Manganese)	Mg (Magnesium)	Zn (Zinc)	Ti (Titanium)	Cr (Chrome)	AL (Aluminium)
0,10-0,30	0,30-0,60	0,1	0,1	0,35-0,60	0,15	0,1	0,05	Remaining
0,17	0,42	0,01	0,03	0,47	0,01	0,01	0,01	98,8

MECHANICAL PROPERTIES			
Rupture Strength Rm (N/mm ²) min.215	Yield Strength Rp 0,2 (N/mm ²)min.170	Elongation A 50 mm (%)min.6	Brinel HB min.70
216	171	7	70

INO-CRP-ALU-PRV



Hinged door front frame . this frame is front Wall frame which fixed With Poliamid Heat Bridge we Protect Insulation in Maximum Level . Aluminium DIN 50049.2.2. / EN 10204-3.1.B Standard anodized coated aluminum .

CHEMICAL COMPOSITION								
Fe (Iron)	Si (Silisum)	Cu (Copper)	Mn (Manganese)	Mg (Magnesium)	Zn (Zinc)	Ti (Titanium)	Cr (Chrome)	AL (Aluminium)
0,10-0,30	0,30-0,60	0,1	0,1	0,35-0,60	0,15	0,1	0,05	Remaining
0,17	0,42	0,01	0,03	0,47	0,01	0,01	0,01	98,8

MECHANICAL PROPERTIES			
Rupture Strength Rm (N/mm ²) min.215	Yield Strength Rp 0,2 (N/mm ²)min.170	Elongation A 50 mm (%)min.6	Brinel HB min.70
216	171	7	70



İNO-CRP-ALU-LNK



Hinged Door Rear frame . This frame is Rear Wall frame which fixed With Front Wall Frame . Aluminium DIN 50049.2.2. / EN 10204-3.1.B Standard anodized coated aluminum .

CHEMICAL COMPOSITION								
Fe (Iron)	Si (Silium)	Cu (Copper)	Mn (Manganese)	Mg (Magnesium)	Zn (Zinc)	Ti (Titanium)	Cr (Chrome)	AL (Aluminum)
0,10-0,30	0,30-0,60	0,1	0,1	0,35-0,60	0,15	0,1	0,05	Remaining
0,17	0,42	0,01	0,03	0,47	0,01	0,01	0,01	98,8

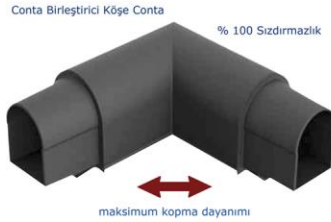
MECHANICAL PROPERTIES			
Rupture Strength Rm (N/mm ²) min.215	Yield Strength Rp 0,2 (N/mm ²) min.170	Elongation A 50 mm (%) min.6	Brinell HB min.70
216	171	7	70

İNO-CRP-CNT



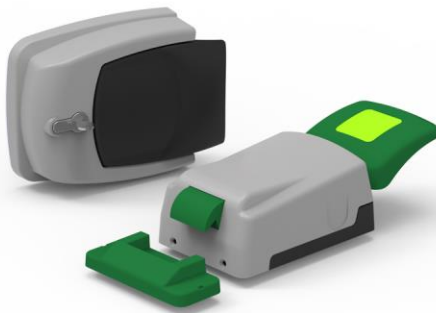
Hinged Door Insulation Gaskets are used for insulation around the door wing . We Made of Epdm & PVC rubber . it's in compliance with 21.CFR 177.2600 specifications & quality standards

İNO-CRP-KŞTK



Hinged door Wing Corner Gasket it's used for corners of gaskets rotating for insulation around the wing. We Made of Epdm & PVC rubber . it's in compliance with 21.CFR 177.2600 specifications & quality standards

İNO-CRP-KL



Hinged door Handle is applied on the wing Internal handle , outer handle and lock ISO 9001: 2008- GHP good hygiene practices standard PA 6.6 (Poliamid 6.6) % 30 GF we are manufactured

Mekaniksel Özellikler	Polamid 66	Plastik Türü	Poliamid 66
Sembol	PA 66	Elektriksel Özellikler	
Yoğunluk (g/cm ³)	1.13 - 1.15	Sembolü	PA 66
Kopma Mukavemeti (Mpa)	66-86	Spesifik Direnç (ohm.cm)	10 ²² - 10 ²³
Kopma Uzaması (%)	30-300	Yüzey Direnci (ohm)	10 ²² - 10 ²³
Eğilme Mukavemeti (Mpa)	80-105	Dielektrik Sabiti (10 ³ Hz)	03.04.2005
Basma Mukavemeti (Mpa)	70-100	Dielektrik Kayıp Faktörü (10 ⁶ Hz)	0.03 - 0.2
Darbe Mukavemeti (çentikli) (J/cm)	0.43-1.14	Dielektrik Direnci (KV / mm)	20-150
Elastik Modül (eğilmede) (Mpa)	1000-2800	Termal Özellikler	
Elastik Modül (eğilmede) (Mpa)	2000-3400	Kristal Erime veya Amorf Yumuşama Noktası (°C)	255-265
Elastik Modül (basmada) (Mpa)	-	Yük Altında Deformasyon Sıcaklığı (°C)	75-105
Sertlik		Maksimum Çalışma Sıcaklığı (°C) Uzun-kısa süre	90-180
Rockwell R	108-120	Spesifik Isı (cal/gr °C)	0.40-0.41
Rockwell M	83-89	Isıl Genleşme Katsayısı (x10 ⁶ cm/cm °C)	70-100
Shore D	-	Isıl İletkenlik Katsayısı (x10 ⁸ cal / sn. cm. °C)	4.8 - 5.8
Sürtünme Katsayısı	0.15-0.42	Yanıcılık	V2
Havadan Aldığı Nem (%)	2.4-3.0	Yanma Hızı	Kendi Kendine Söner

İNO-CRP-KLK



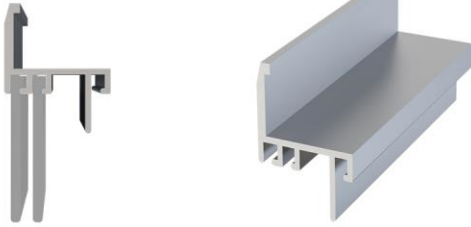
INO-CRP-MN



Hinged Door Hinges We Use to connect between the door wing with the door Frame ISO 9001 : 2008- GHP good hygiene practices standard PA 6.6 (Poliamid 6.6) % 30 GF we are manufactured

Mekaniksel Özellikler	Polamid 66	Plastik Türü	Polamid 66
Sembol	PA 66	Elektriksel Özellikler	PA 66
Yoğunluk (g/cm ³)	1.13 - 1.15	Sembolü	PA 66
Kopma Mukavemeti (Mpa)	66-86	Spesifik Direnç (ohm.cm)	10 ¹² - 10 ¹³
Kopma Uzaması (%)	30-300	Yük Direnci (ohm)	10 ¹² - 10 ¹³
Eğilme Mukavemeti (Mpa)	80-105	Dielektrik Sabiti (10 ⁸ Hz)	03.04.2005
Basma Mukavemeti (Mpa)	70-100	Dielektrik Kayıp Faktörü (10 ⁸ Hz)	0.03 - 0.2
Darbe Mukavemeti (çentikli) (j/cm)	0.43-1.14	Dielektrik Direnci (KV / mm)	20-150
Elastik Modül (çekmede) (Mpa)	1000-2800	Termal Özellikler	
Elastik Modül (eğilmede) (Mpa)	2000-3400	Kristal Erime veya Amorf Yumuşama Noktası (°C)	255-265
Elastik Modül (basmada) (Mpa)	-	Yük Altında Deformasyon Sıcaklığı (°C)	75-105
Sertlik		Maksimum Çalışma Sıcaklığı (°C) Uzun-kısa süre	90-180
Rockwell R	108-120	Spesifik Isı (cal/gr °C)	0.40-0.41
Rockwell M	83-89	Isıl Genleşme Katsayısı (x10 ⁶ cm/cm °C)	70-100
Shore D	-	Isıl İletkenlik Katsayısı (x10 ⁸ cal / sn. cm. °C)	4.8 - 5.8
Sürtünme Katsayısı	0.15-0.42	Yanıcılık	V2
Havadan Aldığı Nem (%)	2.4-3.0	Yanma Hızı	Kendi Kendine Söner

INO-CRP-ESK



Hinged door Wing bottom Threshold Aluminum Profile are attaches to the Wing frame at the bottom of the Door & if you did not use can turns the door without a threshold. Aluminium DIN 50049.2.2. / EN 10204-3.1.B Standard anodized coated aluminum .

CHEMICAL COMPOSITION									
Fe (Iron)	Si (Silisum)	Cu (Copper)	Mn (Manganese)	Mg (Magnesium)	Zn (Zinc)	Ti (Titanium)	Cr (Chrome)	AL (Aluminum)	
0,10-0,30	0,30-0,60	0,1	0,1	0,35-0,60	0,15	0,1	0,05	Remaining	
0,17	0,42	0,01	0,03	0,47	0,01	0,01	0,01	98,8	

MECHANICAL PROPERTIES			
Rupture Strength Rm (N/mm ²) min.215	Yield Strength Rp 0,2 (N/mm ²)min.170	Elongation A 50 mm (%)min.6	Brinel HB min.70
216	171	7	70

INO-CRP-ALT-CNT



Hinged door Wing bottom Gasket used for insulation on the underside of the door Wing . It is made of Epdm and PVC rubber. it's in compliance with 21.CFR 177.2600 specifications & quality standards

INO-CRP-PVC-TP



Hinged door Wing bottom Gasket used for insulation on the underside of the door Wing . It is made of Epdm and PVC rubber. it's in compliance with 21.CFR 177.2600 specifications & quality standards



İNO-CRP-RZS

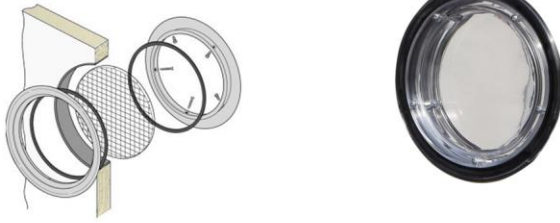


Hinged door Heater applied to the channel in the door wing Unit can be cut silicone as 30 / w-50 / w according to requirement , Direct connection to 220v mains

İletken Kondüktör:	2x0,75 mm ² Nikel-Bakır
Isıtma Teli:	Nikel Krom veya Nikel Bakır
Dış Çap:	5,00 mm x 7,00 mm
Max. Ohm.:	---
Max. Voltaj:	220 - 230 V
Max. Güç:	20 w/m → 60 w/m
Max. Çalışma Sıcaklığı:	-70°C / +200°C
Tolerans:	Rezistans: ± %10
	Çap: ±0,2 mm
	Boy: ± %1
Sonlandırma İzolasyon:	Shiring Makaron veya Silikon Sonlandırma Parçası
Max. Devre Uzunluğu:	40 - 80 meter



İNO-CRP-PEN



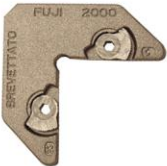
Hinged door Viewing Window It is a system for seeing inside & outside . made of fiberglass which production on hard & transparent material & Epdm flexible seals 100% leak proof

İNO-CRP-VD



Hinged Door Collecting Screw , use when Mounting the door.

İNO-CRP-PRKŞ



Hinged door Aluminum Frame
Zinc Hinged Door connection apparatus



inovarefrigeration



iNOVA YAPI LTD STi.

Mehmet Akif Cad.No:41 Kısıkköy-Menderes-İzmir / Turkey



Phone : 00 90 232 257 56 70
Fax : 00 90 232 257 52 60
Mobile : 00 90 530 948 42 35



www.inovayapi.com
info@inovayapi.com

inovarefrigeration
by INOVA YAPI